

SWIPe Installation

MARCH 2026

Introduction

SWIPe is an application that will need to be installed on any computer that will be used for the WINNIE application. This program allows for peripheral equipment such as scanners and e-pads to be used with WINNIE.

Document Purpose

This document provides Information Technology groups with the necessary information required to install SWIPe on their computers. If SWIPe is only being updated, please follow these same steps.

Instructions

Windows 11

Login to the computer

A Local Administrator account will need to be used to install SWIPe on each computer.

- For State supplied computers, log into the Tempuser account.
- For County machines, log into a local administrator account for that computer.

Downloading the SWIPe File

Open the Agency Gateway site on FileZilla.

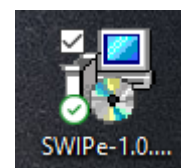
Navigate to the SWIPe folder.

Download the SWIPe msi file (example file name: SWIPe-1.0.24289.1.msi) to the desktop.

NOTE! If you have a previous version of SWIPe installed, uninstall the previous version of SWIPe before installing the new version. Having multiple versions of SWIPe installed at the same time can result in issues.

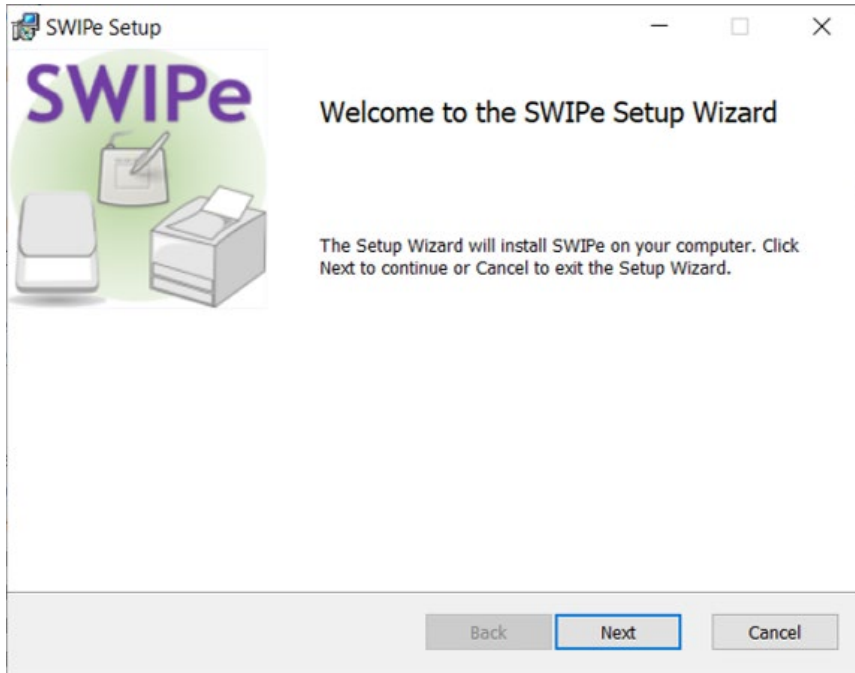
Installation Steps

- Once Downloaded, right click on the icon on the desktop.

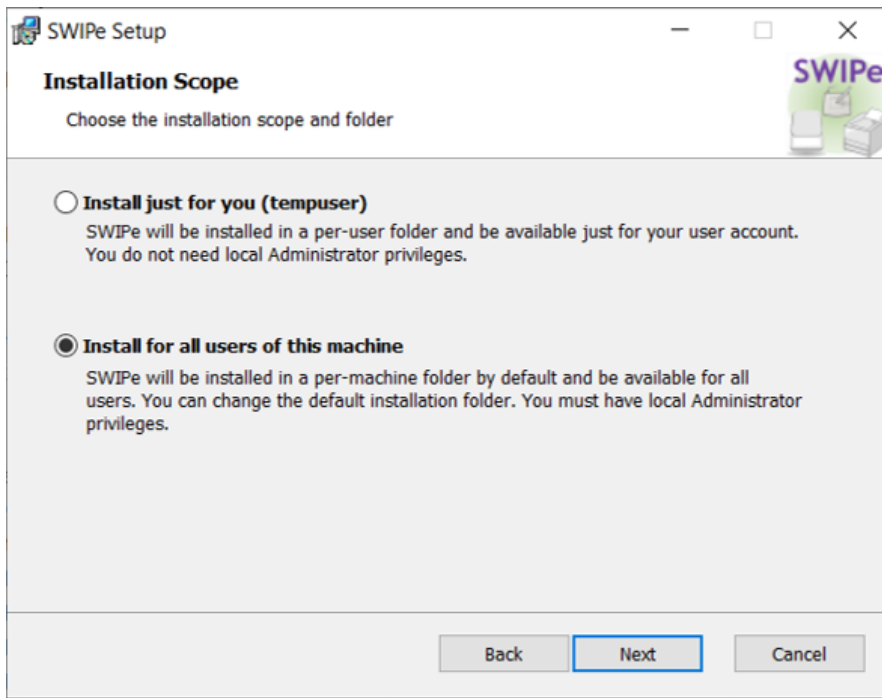


SWIPE INSTALLATION

- Select Install.
- Click the Next button on the Setup Wizard message.

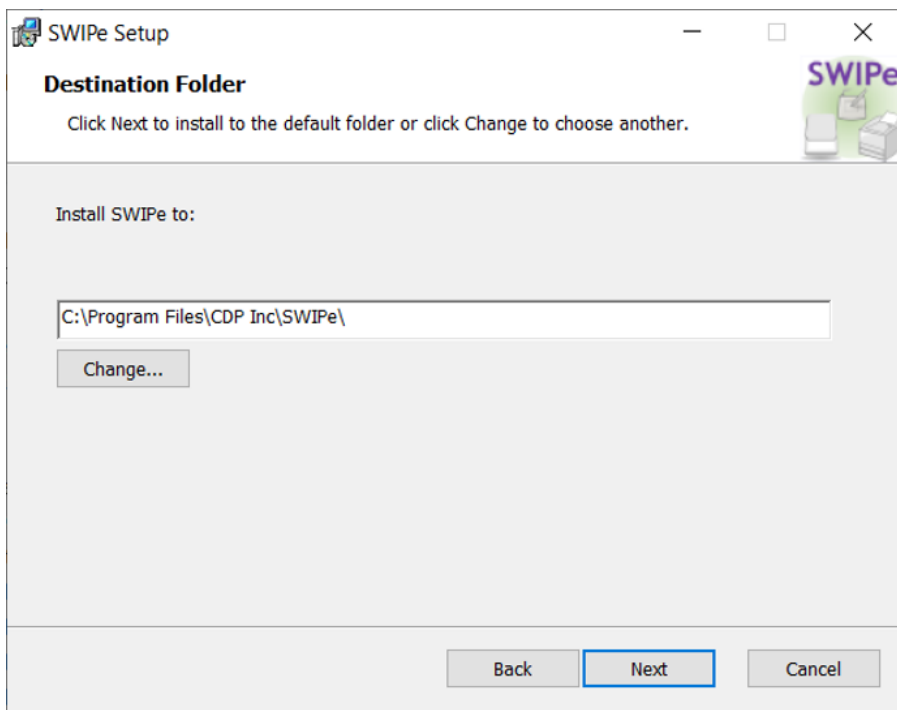


- Click the "Install for all users of this machine" radio button on the Installation Scope message.
- Click the Next button.

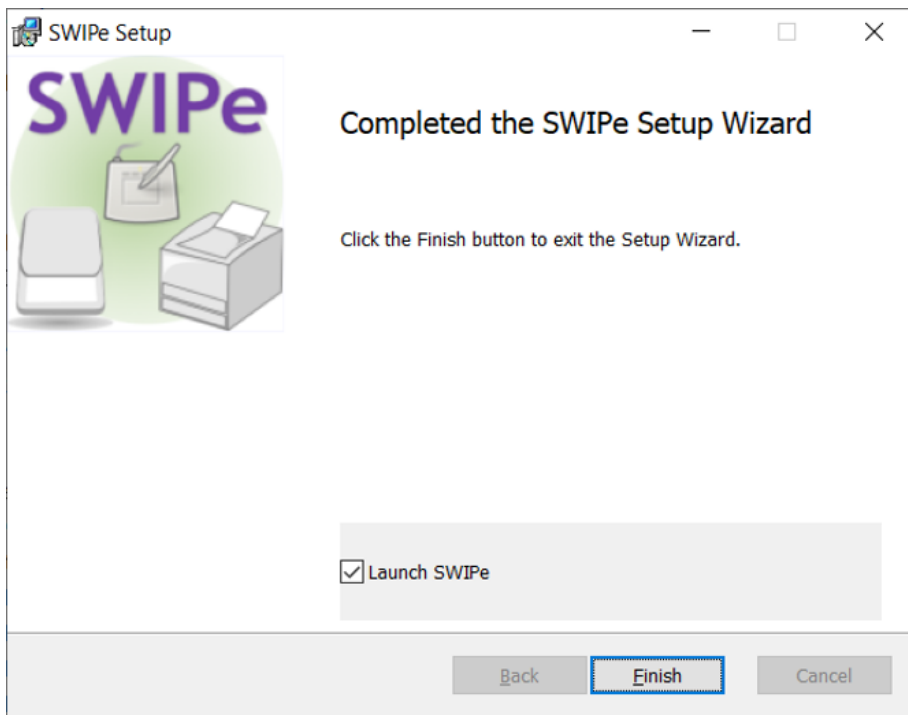


SWIPE INSTALLATION

- Click the Next button on the Destination Folder message.

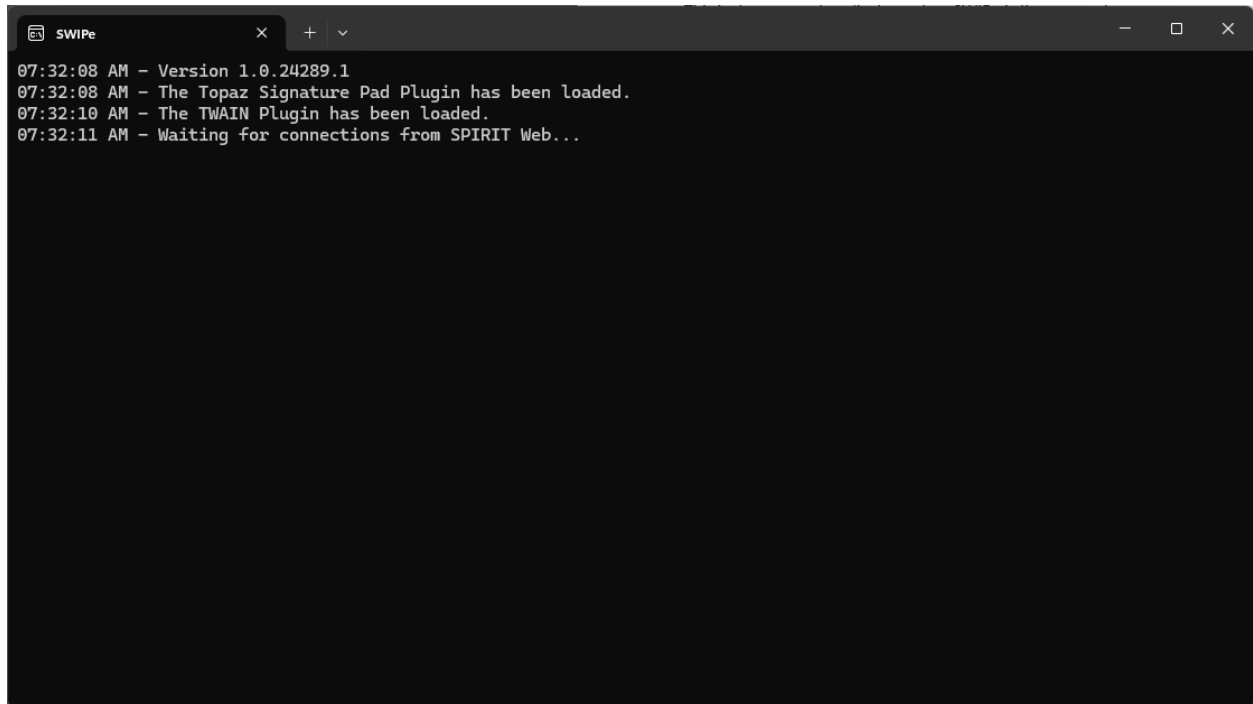


- A pop-up about making changes to the computer will display. Click Yes on this pop-up.
- Click the Finish button on the Completed Wizard message.



SWIPE INSTALLATION

This is the screen that displays when SWIPE is first opened.

A screenshot of a Windows application window titled "SWIPE". The window has a dark background and displays the following text in a monospaced font:

```
07:32:08 AM - Version 1.0.24289.1
07:32:08 AM - The Topaz Signature Pad Plugin has been loaded.
07:32:10 AM - The TWAIN Plugin has been loaded.
07:32:11 AM - Waiting for connections from SPIRIT Web...
```

The window title bar includes the text "SWIPE" and standard Windows window controls (minimize, maximize, close).

Once this displays, SWIPE is ready for use with WINNIE.

Minnesota Department of Health - WIC Program, 625 Robert St N, PO BOX 64975, ST PAUL MN 55164-0975; 1-800-657-3942, health.wic@state.mn.us, www.health.state.mn.us; to obtain this information in a different format, call: 1-800-657-3942.

This institution is an equal opportunity provider.