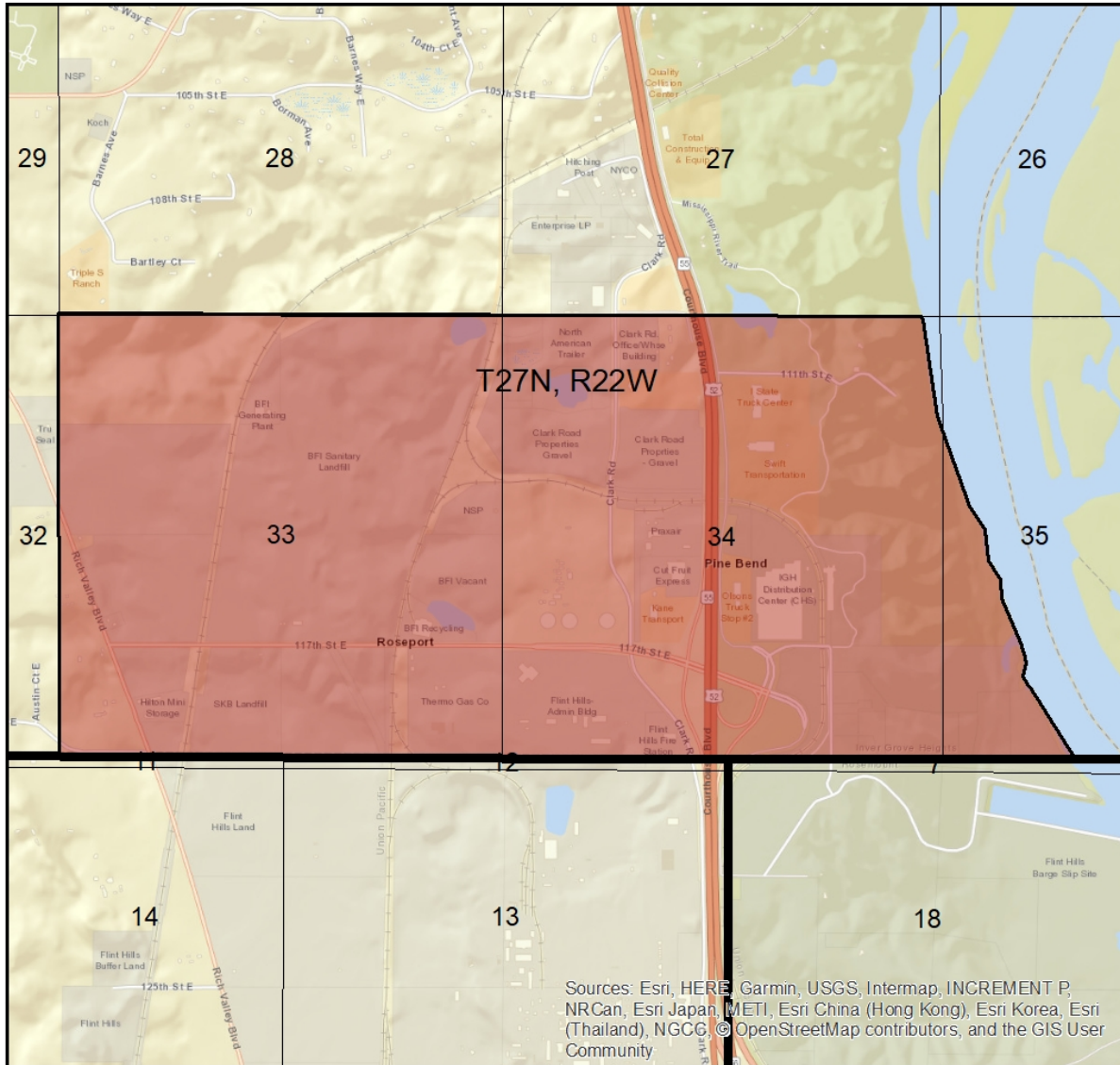


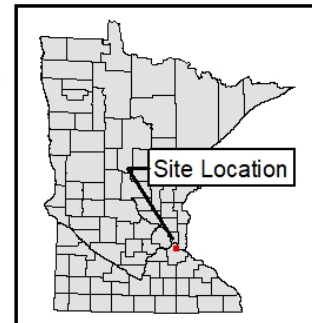
# Special Well and Boring Construction Areas Inver Grove Heights (Pine Bend Area)



Sources: Esri, HERE, Garmin, USGS, Intermap, INCREMENT P, NRCan, Esri Japan, METI, Esri China (Hong Kong), Esri Korea, Esri (Thailand), NGCC, © OpenStreetMap contributors, and the GIS User Community

0 0.275 0.55 Miles

**m** DEPARTMENT  
OF HEALTH  
WELL MANAGEMENT



P.O. Box 64975 • St. Paul, Minnesota 55164-0975 • 651-201-4600 • 800-383-9808 • [health.wells@state.mn.us](mailto:health.wells@state.mn.us)