



# Lead in Drinking Water in Early Care and Education Settings

## Why is Lead a Concern?

Children are vulnerable to environmental contaminants.

Early child care and education settings (ECES) play an important role in reducing lead exposure for children. Lead exposure can cause long term health and behavior concerns including:

- lower IQs
- hearing impairments
- poor classroom performance

**Schools and child care centers are required to begin reporting results and remediation actions to MDH beginning July 1, 2024.**

Licensure is not impacted by results reporting.



## Requirements for Early Care and Education Settings (ECES):

- **Planning**

Create a water management and lead in drinking water plan.

- **Testing**

Sample water from fixtures used for consumption (drinking or cooking) at least once every five years.

- **Remediation**

Remediate any fixtures with a test indicating lead at 5 parts per billion (ppb) or higher.

- **Reporting**

Make water management plans, test results, and corrective action steps available to the public and report lead in drinking water results to MDH.

- **Learn**

Visit our website to learn more about the [Model Plan to Test for Lead in Early Care and Education Settings](https://www.health.state.mn.us/communities/environment/water/schools/modelplan.html) (<https://www.health.state.mn.us/communities/environment/water/schools/modelplan.html>)

## Model Plan Action Steps

1. Sampling Program Development
2. Conduct First Draw Tap Sampling
3. Interpret Results
4. Take Corrective Actions:  
Remediate
5. Retest
6. Communicate Results
7. Report Results
8. Water Management Plan



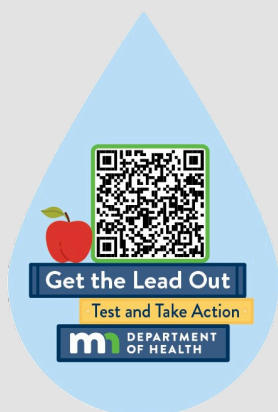
# Minnesota Lead Testing and Remediation in Drinking Water for Schools and Child Care Settings

## Technical Guidance, Available Resources, Regulations, and Funding

MDH has many resources available to assist Early Care and Education Settings (ECES).

Learn more about the Lead In Schools program, including technical guidance, available resources, regulations and funding at:

[Drinking Water in Schools, Child Care and Head Start Programs](https://www.health.state.mn.us/communities/environment/water/schools/index.html)  
(<https://www.health.state.mn.us/communities/environment/water/schools/index.html>)



## Water Infrastructure Improvements for the Nation (WIIN Grant)

- Provide sample kits
- Conduct testing using appropriate laboratory analysis to develop meaningful results
- Provide training to eligible schools and child cares
- Testing conducted through this program utilizes the Model Plan and EPA's 3T's guidance document
- Meet the state requirements for schools and child cares

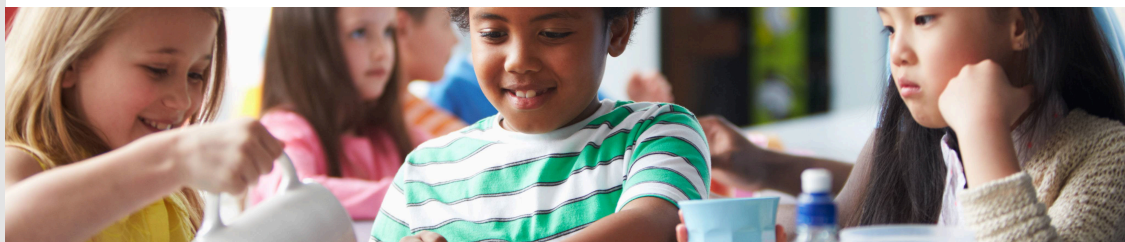
## Lead Remediation in Drinking Water in Schools and Child Care Settings

MDH grant program funding remediation:

- Fixture and plumbing removal and/or replacement
- Installation of filters or filtered hydration stations
- Water management devices such as automatic pipe flushers

## Hydration Stations

- Filtered water units, or hydration stations, provide a healthy alternative to sugary drinks, especially in communities with limited access to healthy, affordable beverage choices
- Properly certified hydration stations remove lead and other contaminants associated with plumbing materials
- These grants are open to a variety of community programs but prioritize locations regularly serving young children



For More Information  
Lead Testing in Drinking Water email list,  
<https://www.health.state.mn.us/communities/environment/water/schools/index.html>

[www.health.state.mn.us](https://www.health.state.mn.us)  
To obtain this information in a different format, call:  
651-201-4700