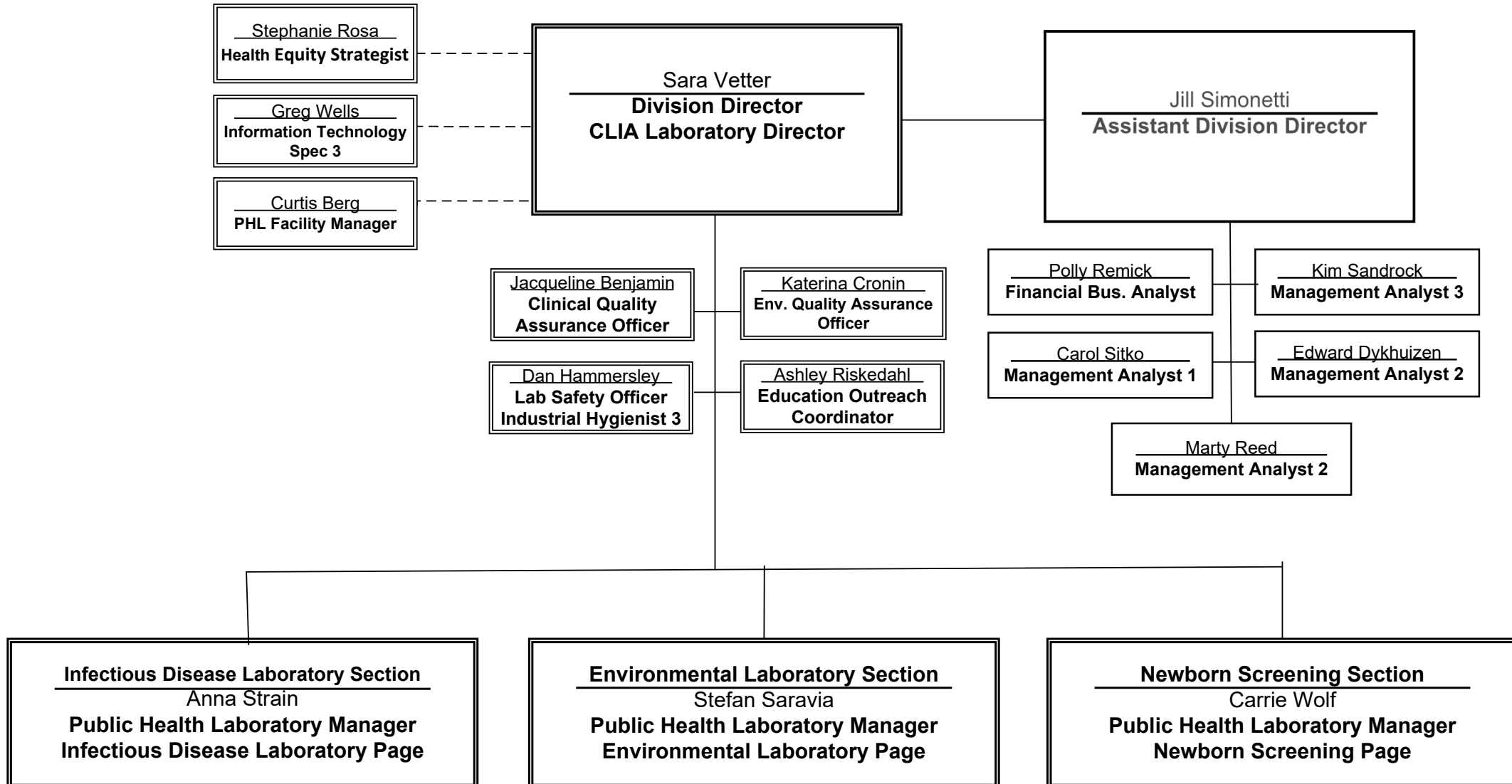
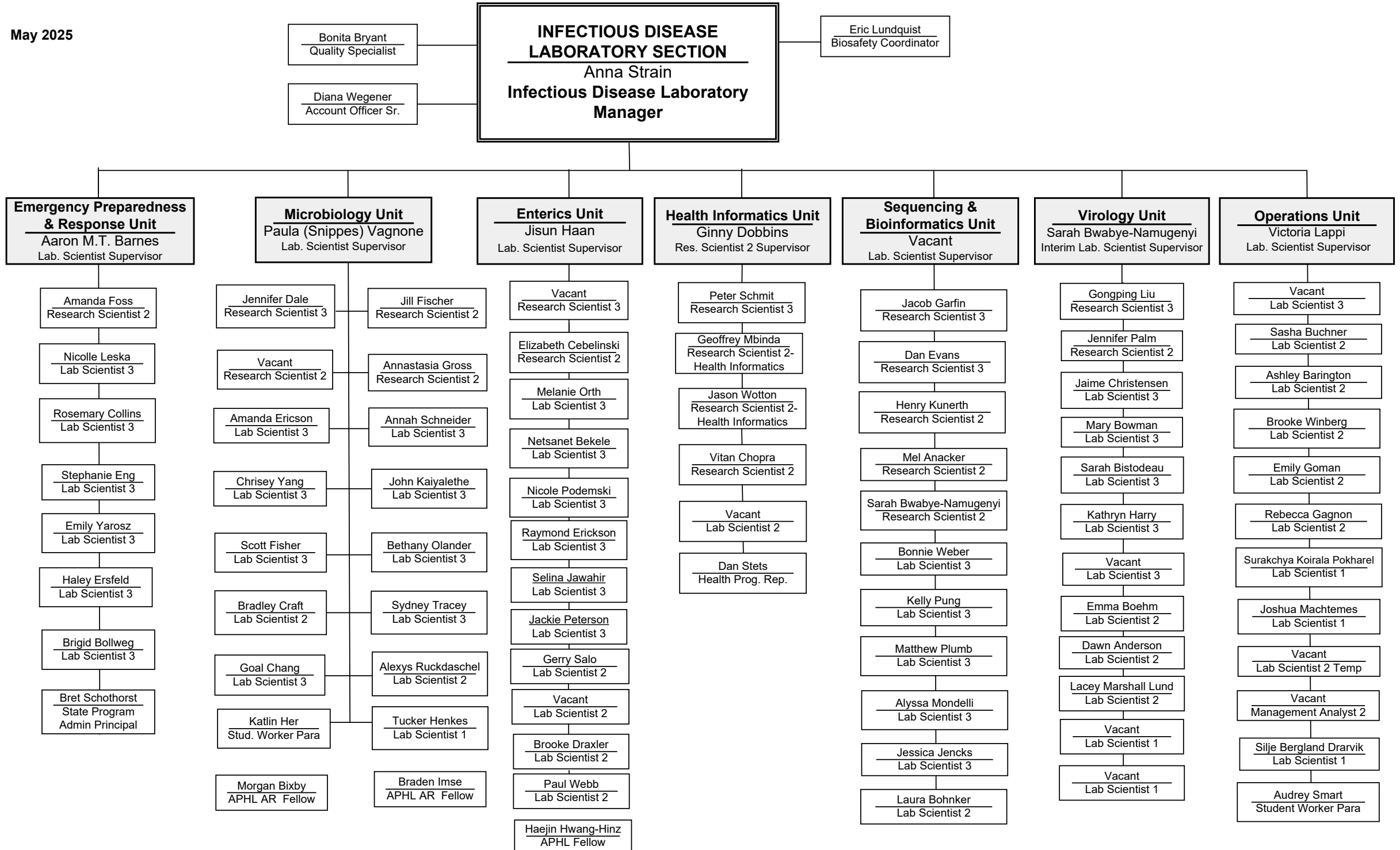


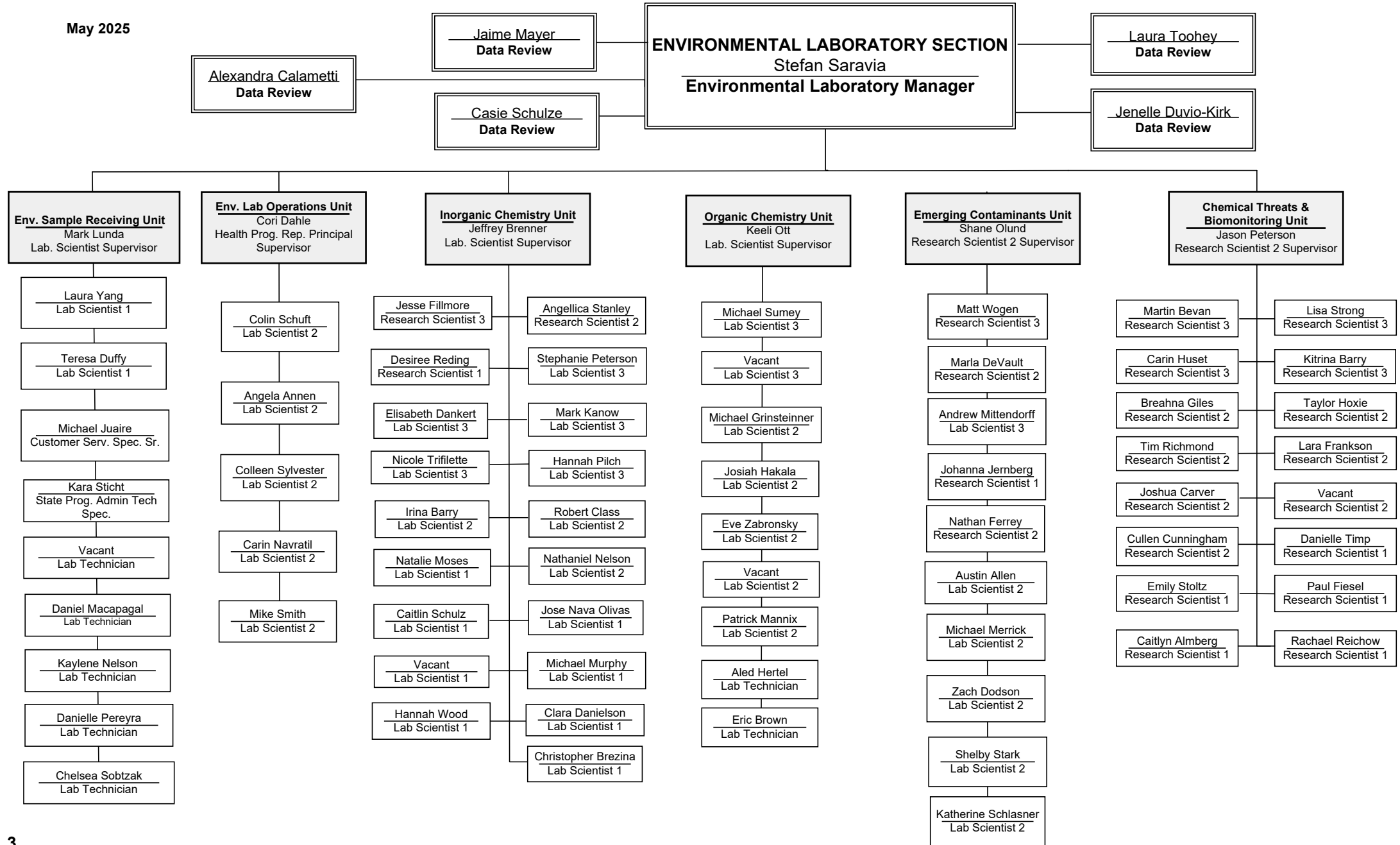
# Minnesota Department of Health Public Health Laboratory Division

May 2025

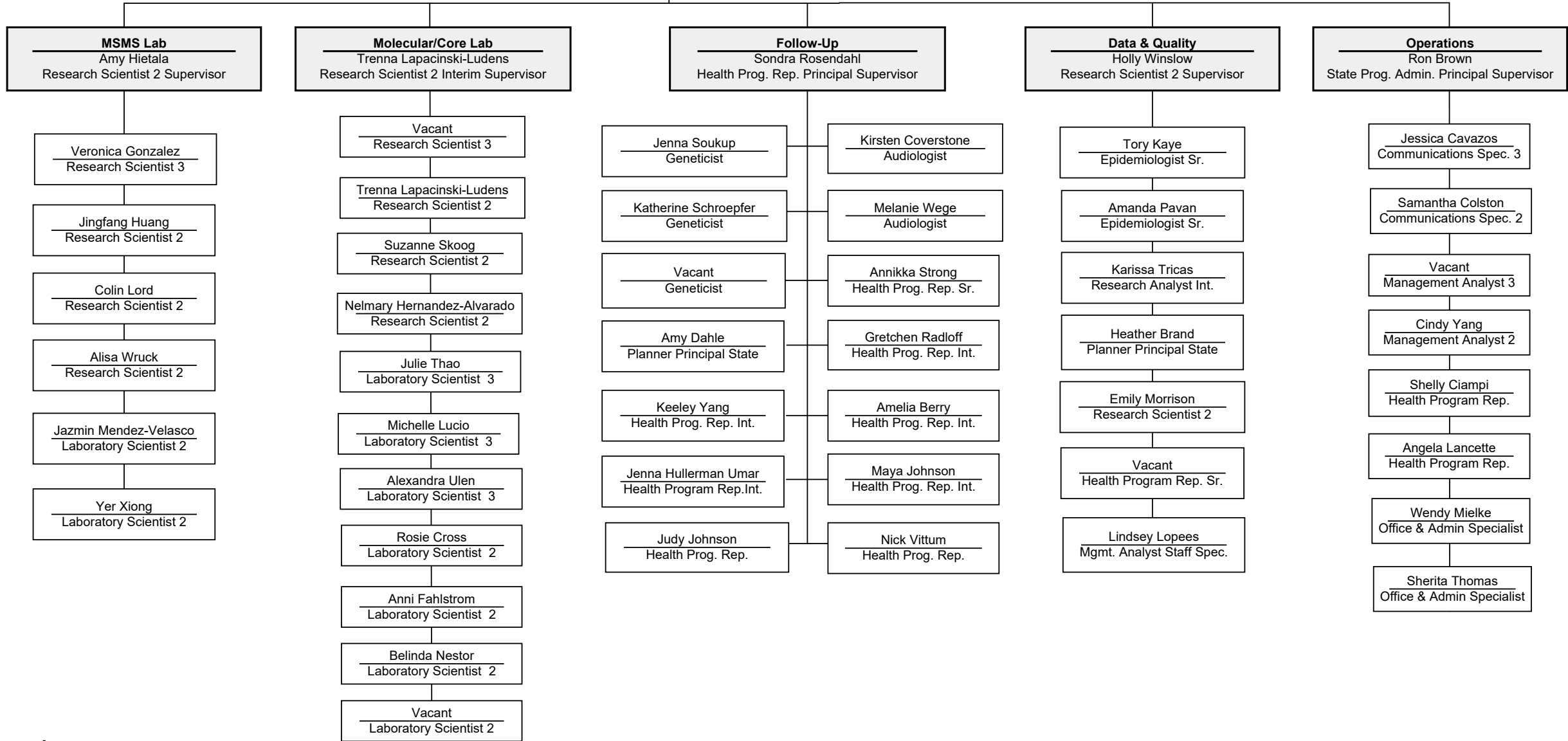




May 2025



**NEWBORN SCREENING SECTION**  
Carrie Wolf  
**Newborn Screening Manager**



## Public Health Laboratory Division Organizational Chart

This is the text version of the Division organizational chart for the Public Health Laboratory of the Minnesota Department of Health.

### Director's Office:

Sara Vetter is the Division Director and CLIA Laboratory Director. The Section Managers, Carrie Wolf, Newborn Screening Section Manager; Stefan Saravia, Environmental Laboratory Section; Anna Strain, Infectious Disease Laboratory Section; Dan Hammersley, Lab Safety Officer (Industrial Hygienist 3); Katerina Cronin, Environmental Laboratory Quality Assurance Officer; Jaqueline Benjamin, Clinical Laboratory Quality Assurance Officer; Ashley Riskedahl, Education Outreach Coordinator; and Jill Simonetti, Assistant Division Director; report to the Director. Stephanie Rosa, Health Equity Specialist, reports to the Office of Health Equity. Greg Wells, Information Technology Specialist 3; reports to MNIT. Curtis Berg, PHL Facility Manager, reports to MDH Facilities Management. Jill Simonetti is the Interim Assistant Division Director. Polly Remick, Financial Business Analyst; Kim Sandrock, Management Analyst 3; Edward Dykhuizen, Management Analyst 2; Marty Reed, Management Analyst 2; and Carol Sitko, Management Analyst 1; report directly to the Assistant Division Director.

### Infectious Disease Laboratory Section:

Anna Strain is the Infectious Disease Laboratory Section Manager: Bonita Bryant; Program Administrator Principal; Dianna Wegener, Account Officer Senior; and Eric Lundquist, Biosafety Coordinator; report directly to the Infectious Disease Laboratory Manager. The seven Unit Supervisors listed below; also report directly to the Infectious Disease Manager:

- Sarah Bwabye Namugenyi, Interim Lab. Scientist Supervisor, Immunology and Virology Unit: Gongping Liu, Research Scientist 3; Jennifer Palm, Research Scientist 2; Sarah Bistodeau, Lab. Scientist 3; Jamie Christensen, Lab. Scientist 3; Kathryn Harry, Lab. Scientist 3; Mary Bowman, Lab. Scientist 3; Dawn Anderson, Lab. Scientist 2; Lacey Marshall Lund, Lab. Scientist 2; Emma Boehm, Lab. Scientist 2; and Vacant, Lab. Scientist 1.
- Victoria Lappi, Lab. Scientist Supervisor, Infectious Disease Operations Unit: Vacant, Management Analyst 2; Vacant, Lab. Scientist 3; Brooke Winberg, Lab. Scientist 2; Rebecca Gagnon, Lab. Scientist 2; Sasha Buchner, Lab. Scientist 2; Ashley Barington, Lab. Scientist 2; Emily Goman, Lab. Scientist 2; Vacant, Lab. Scientist 2 Temp.; Surakchya Koirala Pokharel, Lab. Scientist 1; Joshua Machtemes, Lab. Scientist 1; and Silje Bergland Drarvik; Lab. Scientist 1.
- Jisun Haan, Lab. Scientist Supervisor, Enterics Unit: Vacant, Research Scientist 3; Elizabeth Cebelinski, Research Scientist 2; Melanie Orth, Lab. Scientist 3; Netsanet Bekele, Lab. Scientist 3; Nicole Podemski, Lab. Scientist 3; Raymond Erickson, Lab. Scientist 3; Selina Jawahir, Lab. Scientist 3; Jackie Peterson, Lab. Scientist 3; Geri Salo, Lab. Scientist 2; Paul Webb, Lab. Scientist 2; Brooke Draxler, Lab. Scientist 2; Vacant, Lab. Scientist 2; and Haejin Hwang-Hinz, APHL Bioinformatics Fellow.
- Aaron M.T. Barnes, Lab. Scientist Supervisor, Emergency Preparedness and Response Unit: Brigid Bollweg, Lab. Scientist 3; Stephanie Eng, Lab. Scientist 3; Emily Yarosz, Lab. Scientist 3; Nicolle Leska, Lab. Scientist 3; Rosemary Collins, Lab. Scientist 3; Haley Ersfeld, Lab. Scientist 3; Amanda Foss, Lab. Scientist 2; and Bret Schothorst, State Program Administrator Principal.

- Ginny Dobbins, Research Scientist 2 Supervisor, Health Informatics Unit: Peter Schmit, Research Scientist 3; Geoffrey Mbinda, Research Scientist 2; Jason Wotton, Research Scientist 2-Health Informatics; Vitan Chopra, Research Scientist 2; Vacant, Lab. Scientist 2; and Dan Stets; Health Program Rep.
- Paula Snippes Vagnone, Lab. Scientist Supervisor, Microbiology Unit: Jennifer Dale, Research Scientist 3; Anastasia Gross, Research Scientist 2; Vacant, Research Scientist 2; Jill; Fischer, Research Scientist 2; Annah Schneider, Lab. Scientist 3; Chrissy Yang, Lab. Scientist 3; Scott Fisher, Lab. Scientist 3; John Kaiyalethe, Lab. Scientist 3; Bonnie Weber, Lab. Scientist 3; Bethany Olander, Lab. Scientist 3; Amanda Ericson, Lab. Scientist 3; Sydney Tracey, Lab. Scientist 3; Goal Chang, Lab. Scientist 3, Alexys Ruckdaschel, Lab. Scientist 2; Bradley Craft, Lab. Scientist 2; Tucker Henkes, Lab. Scientist 1; Katlin Her, Student Worker Para; Morgan Bixby, APHL AR Fellow; and Braden Imse, APHL AR Fellow.
- Vacant, Lab. Scientist Supervisor, Sequencing and Bioinformatics Unit: Dan Evans, Research Scientist 3; Jacob Garfin, Research Scientist 3; Henry Kunerth, Research Scientist 2; Mel Anacker, Research Scientist 2; Sarah Bwabye Namugenyi, Research Scientist 2; Matthew Plumb, Lab. Scientist 3; Kelly Pung, Lab. Scientist 3; Alyssa Mondelli, Lab. Scientist 3; Jessica Jencks, Lab. Scientist 3; and Laura Bohnker, Lab. Scientist 2.

### **Environmental Laboratory Section:**

Stefan Saravia is the Environmental Laboratory Section Manager: Laura Toohey, Data Review; Jenelle Duvio-Kirk, Data Review; Jaime Mayer, Data Review; Casie Schulze, Data Review; and Alexandra Calametti, Data Review; report directly to the Environmental Laboratory Manager. The six Unit Supervisors listed below report directly to the Environmental Laboratory Manager:

- Keeli Ott, Lab. Scientist Supervisor, Organic Chemistry Unit: Michael Sumei, Lab. Scientist 3; Vacant, Lab. Scientist 3; Michael Grinsteiner, Lab. Scientist 2; Eve Zabronsky, Lab. Scientist 2; Vacant, Lab. Scientist 2; Josiah Hakala, Lab. Scientist 2; Patrick Mannix, Lab. Scientist 2; Aled Hertel, Lab. Technician; and Eric Brown, Lab. Technician.
- Cori Dahle, Health Program Rep. Principal Supervisor, Environmental Laboratory Operations Unit: Colin Schuft, Lab. Scientist 2; Angie Annen, Lab. Scientist 2; Carin Navratil, Lab. Scientist 2; Colleen Sylvester, Lab. Scientist 2; and Mike Smith, Lab. Scientist 2.
- Jeffrey Brenner, Lab. Scientist Supervisor, Inorganic Chemistry Unit: Jesse Fillmore, Research Scientist 3; Angellica Stanley, Research Scientist 2; Desiree Reding, Research Scientist 1; Elisabeth Dankert, Lab. Scientist 3; Nicole Triffilette, Lab. Scientist 3; Stephanie Peterson, Lab. Scientist 3; Mark Kanow, Lab. Scientist 3; Hannah Pilch, Lab. Scientist 3; Robert Class, Lab. Scientist 2; Nathaniel Nelson, Lab. Scientist 2; Irina Barry, Lab. Scientist 2; Natalie Moses, Lab. Scientist 1, Vacant, Lab. Scientist 1; Caitlin Schulz, Lab. Scientist 1; Jose Nava Olivas, Lab. Scientist 1, Michael Murphy, Lab. Scientist 1; Christopher Brezina, Lab. Scientist 1; Hannah Wood, Lab. Scientist 1; and Clara Danielson, Lab. Scientist 1.
- Mark Lunda, Lab. Scientist Supervisor, Environmental Sample Receiving Unit: Laura Yang, Lab. Scientist 1; Teresa Duffy, Lab. Scientist 1; Michael Juaire, Customer Service Specialist Senior; Kara Sticht, State Program Admin Tech Specialist; Vacant, Lab. Technician; Daniel Macapagal, Lab. Technician; Kaylene Nelson, Lab. Technician; Danielle Pereyra, Lab. Technician; and Chelsea Sobtzak, Lab. Technician.
- Jason Peterson, Research Scientist 2 Supervisor, Chemical Threats and Biomonitoring Unit: Martin Bevan, Research Scientist 3; Carin Huset, Research Scientist 3; Lisa Strong, Research Scientist 3; Kitrina Barry, Research Scientist 3; Taylor Hoxie, Research Scientist 2; Breahna Giles, Research Scientist 2; Tim Richmond, Research Scientist 2; Lara Frankson, Research Scientist 2, Joshua Carver, Research Scientist 2; Vacant, Research Scientist 2; Emily Stoltz, Research Scientist 1; Caitlyn Almberg, Research Scientist 1; Rachel Reichow, Research Scientist 1; Danielle Timp, Research Scientist 1; and Paul Fiesel, Research Scientist 1.
- Shane Olund, Research Scientist Supervisor, Emerging Contaminants Unit: Matt Wogen, Research Scientist 3; Marla DeVault, Research Scientist 2; Nathan Ferrey, Research Scientist 2; Johanna Jernberg, Research Scientist 1, Andrew Mittendorff, Lab. Scientist 3; Zach Dodson, Lab. Scientist 2; Shelby Start, Lab. Scientist 2; Austin Allen, Lab. Scientist 2; Michael Merrick, Lab. Scientist 2; and Katie Schlasner, Lab. Scientist 2.

## Newborn Screening Program Section:

Carrie Wolf is the Newborn Screening Program Section Manager. The five Unit Supervisors listed below report directly to the Newborn Screening Section Manager.

- Amy Hietala, Research Scientist 2 Supervisor, MSMS Laboratory Unit: Alisha Wruck, Research Scientist 2; Jingfang Huang, Research Scientist 2; Colin Lord, Research Scientist 2; Veronica Gonzalez, Lab. Scientist 3; Yer Xiong, Lab. Scientist 2; and Jazmin Mendez-Velasco, Lab. Scientist 2.
- Trena Lapacinski-Ludens, Research Scientist 2 Interim Supervisor, Molecular and Core Laboratory Unit: Vacant, Research Scientist 3, Vacant, Research Scientist 2; Suzanne Skoog, Research Scientist 2; Nelmary Hernandez-Alvarado, Research Scientist 2; Julie Thao, Lab. Scientist 3; Michelle Lucio, Lab. Scientist 3; Alexandra Ulen, Lab. Scientist 3; Rosie Gross, Lab. Scientist 2; Anni Fahlstrom, Lab. Scientist 2; Belinda Nestor, Lab. Scientist 2; and Vacant, Lab. Scientist 2.
- Sondra Rosendahl, Health Program Rep. Principal, Supervisor, Newborn Screening Follow-Up Unit: Kirsten Coverstone, Audiologist; Melanie Wege, Audiologist; Vacant, Geneticist, Katherine Schroepfer, Geneticist; Jenna Soukup, Geneticist; Amy Dahle, Planner Principal State; Annika Strong, Health Program Rep. Senior; Jenna Hullerman Umar; Health Program Rep Intermediate; Amelia Berry, Health Program Rep. Intermediate; Keely Yang, Health Program Rep. Intermediate; Maya Johnson, Health Program Rep. Intermediate; and Gretchen Radloff, Health Program Rep. Intermediate; Judy Johnson, Health Program Rep.; and Nick Vittum, Health Program Rep.
- Holly Winslow, Research Scientist 2 Supervisor, Data & Quality Unit: Amanda Pavan, Epidemiologist Senior; Tory Kaye, Epidemiologist Senior; Karissa Tricas, Research Analyst Intermediate; Heather Brand, Planner Principal State; Emily Morrison, Research Scientist 2; Lindsey Lopees, Management Analyst Staff Specialist; and Vacant, Health Program Rep Sr.
- Ron Brown, State Program Admin. Principal, Supervisor, Newborn Screening Operations Unit: Jessica Cavazos, Communications Specialist 3; Samantha Colston, Communications Specialist 2; Vacant, Management Analyst 3.; Cindy Yang, Management Analyst 2; Angela Lancette, Health Program Rep.; Shelly Ciampi, Health Program Rep.; Sherita Thomas, Office Administrative Specialist; and Wendy Mielke, Office Administrative Specialist.