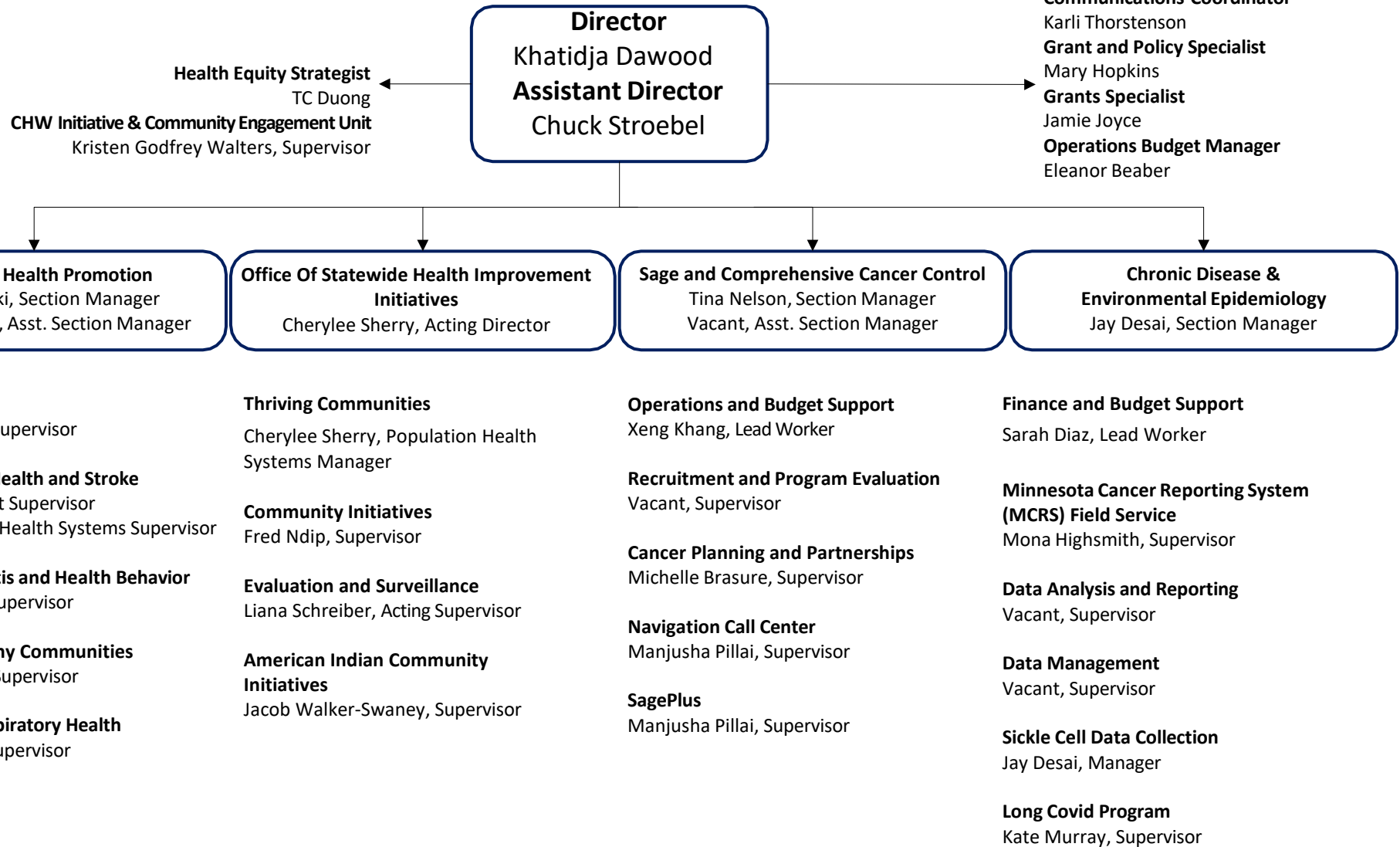




Health Promotion and Chronic Disease Division



# Health Promotion and Chronic Disease Division Organizational Chart

This is the organizational chart for the Health Promotion and Chronic Disease Division leadership of the Minnesota Department of Health.

## Director's Office

Khatidja Dawood is the Division Director, and Chuck Stroebel is the Assistant Division Director, with four Section Managers reporting directly to them. Communications Coordinator Karli Thorstenson, Grants Specialist Jamie Joyce, Projects and Policy Specialist Mary Hopkins, and Administrative Support Staff Kathy Harris, report directly to the Assistant Division Director. Additionally, Eleanor Beaber, Operations Budget Manager supports the Director's Office. The Community Health Worker (CHW) Training Program staff report directly to the Division Director. Kristin Godfrey Walters is the supervisor for the CHW Initiative and Community Engagement Unit. Kelly Lanigan is a management analyst who provides accessibility, budget, and SharePoint support.

## Center for Health Promotion

Ann Zukoski is the Director for the Center for Health Promotion, and Eleanor Beaber is the Assistant Section Manager. Six unit supervisors report directly to Ann Zukoski:

1. Prasida Khanal, Supervisor of the Oral Health Unit
2. Jim Peacock, Supervisor of the Cardiovascular Health and Stroke Unit
3. Nicky Anderson, Supervisor of the Health Systems Unit
4. Bridget Ideker, Supervisor of the Diabetes, Arthritis and Health Behavior Unit
5. Patty Takawira, Supervisor of the Aging and Healthy Communities Unit
6. Andrea Hickie, Supervisor of the Asthma and Respiratory Health Unit

## Office Of Statewide Health Improvement Initiatives

Cherylee Sherry is the Acting Director of the Office of Statewide Health Improvement Initiatives. Cherylee Sherry manages the Population Health Unit. Fred Ndip, Supervisor for Community Initiatives Unit reports to Cherylee Sherry. Two other supervisors report directly to Cherylee Sherry, Acting Director.

1. Jacob Walker-Swaney, Supervisor of the American Indian Community Initiatives Unit
2. Liana Schreiber, Acting Supervisor of the Evaluation and Surveillance Unit

## Cancer Control and Prevention/Sage Programs Section

Tina Nelson, Section Manager, manages the Cancer Control and Prevention/Sage Programs Section. The Assistant Section Manager is vacant, overseeing operations. Three supervisors report directly to Tina:

1. Vacant, Supervisor of the Recruitment and Program Evaluation Unit
2. Michelle Brasure, Supervisor of the Comprehensive Cancer Control Unit
3. Manjusha Pillai, Supervisor of the Navigation Call Center Unit, and SagePlus Program

## Chronic Disease and Environmental Epidemiology Section

Jay Desai, Section Manager, supervises the Chronic Disease and Environmental Epidemiology Section. Four supervisors report directly to him:

The Minnesota Cancer Reporting System has three unit supervisors reporting to Jay Desai:

1. Mona Highsmith, Supervisor of the Field Service Unit
2. Vacant, Supervisor of the Data Analysis Unit
3. Vacant, Supervisor of the Data Management Unit

In addition, Kate Murray, serves as the supervisor of the Long-COVID Unit

This section also supports data and programmatic work-related sickle cell data collection.

Sarah Diaz provides support for operations and finance for this section.

Minnesota Department of Health  
Health Promotion and Chronic Disease Division  
PO Box 64975  
St. Paul, MN 55164-0975  
651-201-3600

[www.health.state.mn.us](http://www.health.state.mn.us)

January 14, 2026

*To obtain this information in a different format, call: 651-201-3600.*