

Health Policy Division Staff and Organization List

FEBRUARY 4, 2026

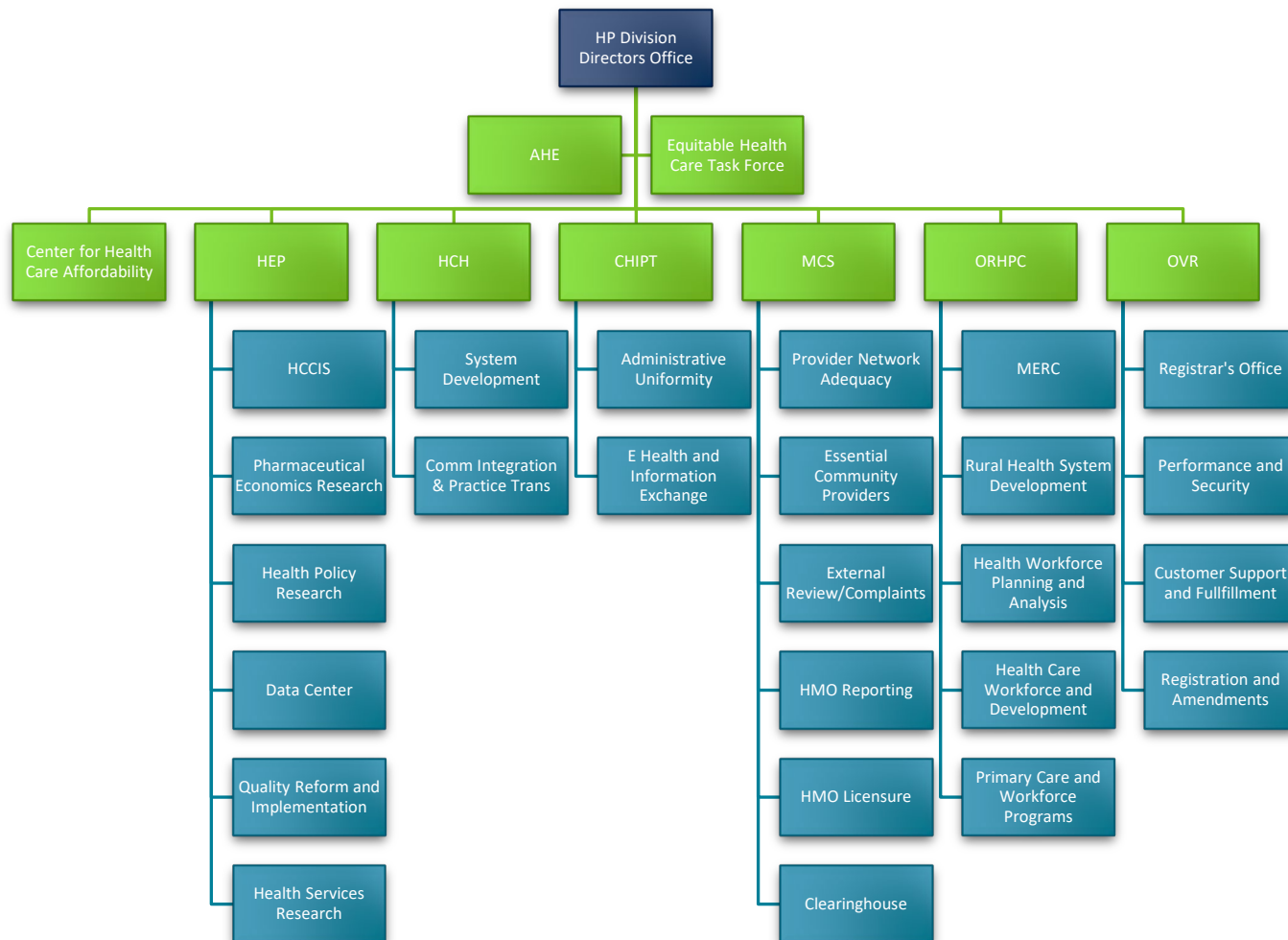


Table of Contents

Health Policy Division Staff and Organization List	1
Division Director's Office	2
Adverse Events Reporting (AHE)	2
Equitable Health Care Task Force.....	2
Center for Health Information Policy and Transformation (CHIPT)	2
Administrative Uniformity.....	2
E Health and Health Information Exchange	2
Center for Health Care Affordability.....	2
Health Care Homes (HCH)	3
System Development	3
Community Integration and Practice Transformation	3
Health Economics Program (HEP).....	3
Minnesota Health Care Cost Information System (HCCIS).....	3
Pharmaceutical Economics Research	3
Health Policy Research	4
Data Center	4
Quality Reform Implementation	4
Health Services Research	4
Managed Care Systems (MCS).....	5
Clearinghouse.....	5
Office of Rural Health and Primary Care (ORHPC).....	5
MERC (Health Care Workforce and Education).....	5
Rural Health System Development/Trauma	5
Health Workforce Planning and Analysis	6
Health Care Workforce and Development.....	6
Primary Care and Workforce Programs	6
Office of Vital Records (OVR).....	7
Registrar's Office	7
Performance and Security.....	7
Customer Support and Fulfillment.....	7
Registration and Fulfillment	8
Health Policy MN.IT Services	8

Division Director's Office

- **Division Director:** Diane Rydrych
- **Assistant Division Directors:** Susan Castellano, Karen Soderberg
 - **Health Policy Specialist:** Tara Borton
 - **Financial Management:**
 - Barb Fischer
 - **Information and Communications Coordinator:** Morgan (Foster) Powers

Adverse Events Reporting (AHE)

- **Program Director:** Rachel Jokela

Equitable Health Care Task Force

- **Reports to:** Division Director's Office
 - Denise McCabe
 - Julia Stumpf

Center for Health Care Affordability

- **Program Director:** Alex Caldwell
 - Elle Talsma Weise

Center for Health Information Policy and Transformation (CHIPT)

- **Program Manager:** Jennifer Fritz
 - Susie Blake
 - Sarah Shaw

Administrative Uniformity

- **Supervisor:** Jennifer Fritz
 - Vacant

E Health and Health Information Exchange

- **Supervisor:** Vacant
 - Bilqis Amatus-Salaam
 - Kari Guida

- Anne Schloegel

Health Care Homes (HCH)

- **Program Manager:** David Kurtzon

System Development

- **Supervisor:** Tina Peters
 - Georgia Anderson
 - Lisa Behr
 - Heidi Carlson
 - Joan Kindt
 - Jennifer Strickland
 - Amanda Ubongen

Community Integration and Practice Transformation

- **Supervisor:** Vacant
 - Catherine Johnson
 - XP Lee

Health Economics Program (HEP)

- **Program Director:** Stefan Gildemeister
- **Program Deputy Director:** Cara Bailey
 - Kristen Ackert
 - Diane Hammond
 - Kelsey Schaezner
 - Joseph Lee

Minnesota Health Care Cost Information System (HCCIS)

- **Supervisor:** Cara Bailey
 - Tracy Johnson

Pharmaceutical Economics Research

- **Supervisor:** Annelisa Steeber
 - Margaret Abraham-Kaz (Contractor)
 - Alissa Bolz (Contractor)

- Margaret Darling
- Sean MacDonell
- Abby Vogel
- Jodi Drinkwine (**PEPR Supervisor**)
 - David Raatz
 - Madison Stangl

Health Policy Research

- **Supervisor:** Vacant (Stefan Gildemeister and Cara Bailey)
 - Kelsey Besse
 - Renee Saarela
 - Michelle Wilson
 - Julia Wacloff
 - Vacant

Data Center

- **Supervisor:** Karl Fenstrom
 - Michael Adams
 - Beth Bowerman
 - Erinn Sanstead

Quality Reform Implementation

- **Supervisor:** Denise McCabe
 - Rachel Cahoon
 - Sarah Evans
 - David Hesse
 - Kelsey Kannenberg

Health Services Research

- **Director:** Pam Mink
 - Mimi Amelang
 - Michael Burian
 - Astrid Knott
 - Ben Nicla

Managed Care Systems (MCS)

- **Program Manager:** Julie Erickson
- **Assistant Program Manager:** Alisha Simon
 - William (Bill) Christjaener
 - Sara Dufour
 - Andrea Ecklund
 - Dena Harrell
 - Nathan Hierlmaier
 - Mekibib Hirpo
 - Eric Holland
 - Kirsten Peterson
 - Michelle Stein
 - Brenda Sorvig
 - Mary Timm
 - Rachel Wittkopp

Clearinghouse

- Reports to MCS
 - Cheryl Jacobson

Office of Rural Health and Primary Care (ORHPC)

- **Program Manager:** Zora Radosevich
 - Robin Bly
 - Vacant

MERC (Health Care Workforce and Education)

- **Supervisor:** Zora Radosevich
 - Diane Reger

Rural Health System Development/Trauma

- **Deputy Director:** Tim Held
 - Emma Distel
 - Courtney Erdman
 - Maria Flor

- LynMarie Harris
- Tammy Peterson
- Gina Vue
- Grace Liu, *student worker*
- Sarah Tannert-Learner, *student worker, HPCD*
- Dee Telkamp

Health Workforce Planning and Analysis

- **Supervisor:** Nitika Moibi
 - Teri Fritsma
 - Valerie Stofferahn
 - Megan Loew
 - Melissa Stevens (Contractor)
 - Madison Weirick

Health Care Workforce and Development

- **Supervisor:** Ann Linde
 - Siham Abdellah
 - Roble Aden
 - Lauren Bumgarner
 - Tarissa Host
 - Melanie Innes
 - Erik Larson
 - Joanne Madrid
 - Renee Richie
 - Samantha Rowbottom
 - Kayla Seymour

Primary Care and Workforce Programs

- **Supervisor:** Laura Sutter
 - Rebekah Ehlebracht
 - Elizabeth Fenske
 - Brenda Flattum
 - Katie Hentges

- Daniel Merkl
- Therese Nett
- Ann Odens
- Liza Root, *contractor*
- Sarah Grafstrom
- Mai La Ong Vang
- Gao Nue Xiong

Office of Vital Records (OVR)

- **Program Manager:** Molly Crawford

Registrar's Office

- **Supervisor:** Molly Crawford
 - Mary L Connor
 - Heidi Granlund
 - Dylan Slivik
 - Sarah Ryan
 - Shonda Wright

Performance and Security

- **Supervisor:** Anne Kleppe
 - Sally Almond
 - Nancy Bollman
 - Melanie Charpentier
 - Cheri Denardo
 - Carl Haydel
 - Nicole Hering
 - Ali Ruprecht

Customer Support and Fulfillment

- **Supervisor:** Bill Devine
 - Jose Andrade
 - Shelly Eichenlaub
 - Michael Fanslow

HEALTH POLICY STAFF

- James Kasal
- Justin Maine
- Sharon Mitchell
- John Mogren
- Seth Nesting
- Mary Roguski
- Gretchen Younger
- Vacant

Registration and Fulfillment

- **Supervisor:** Krista Bauer
 - Lead: Maria Schaff
 - Jean Cocchiarella
 - Kimberly Dodge
 - Aura Mendoza Albuquerque
 - Jean Garman
 - Maureen Sheehy-Kustaa

Health Policy MN.IT Services

- **Supervisor:** Erica Johnson
 - Jason Tillman
 - Noah Mosley
 - Hung Nguyen
 - Adrian Flak
 - Yang Yang
 - Mashood Yunus

Minnesota Department of Health
Health Policy Division
PO Box 64975
St. Paul, MN 55164-0975
www.health.state.mn.us

To obtain this information in a different format, call: 651-201-3560