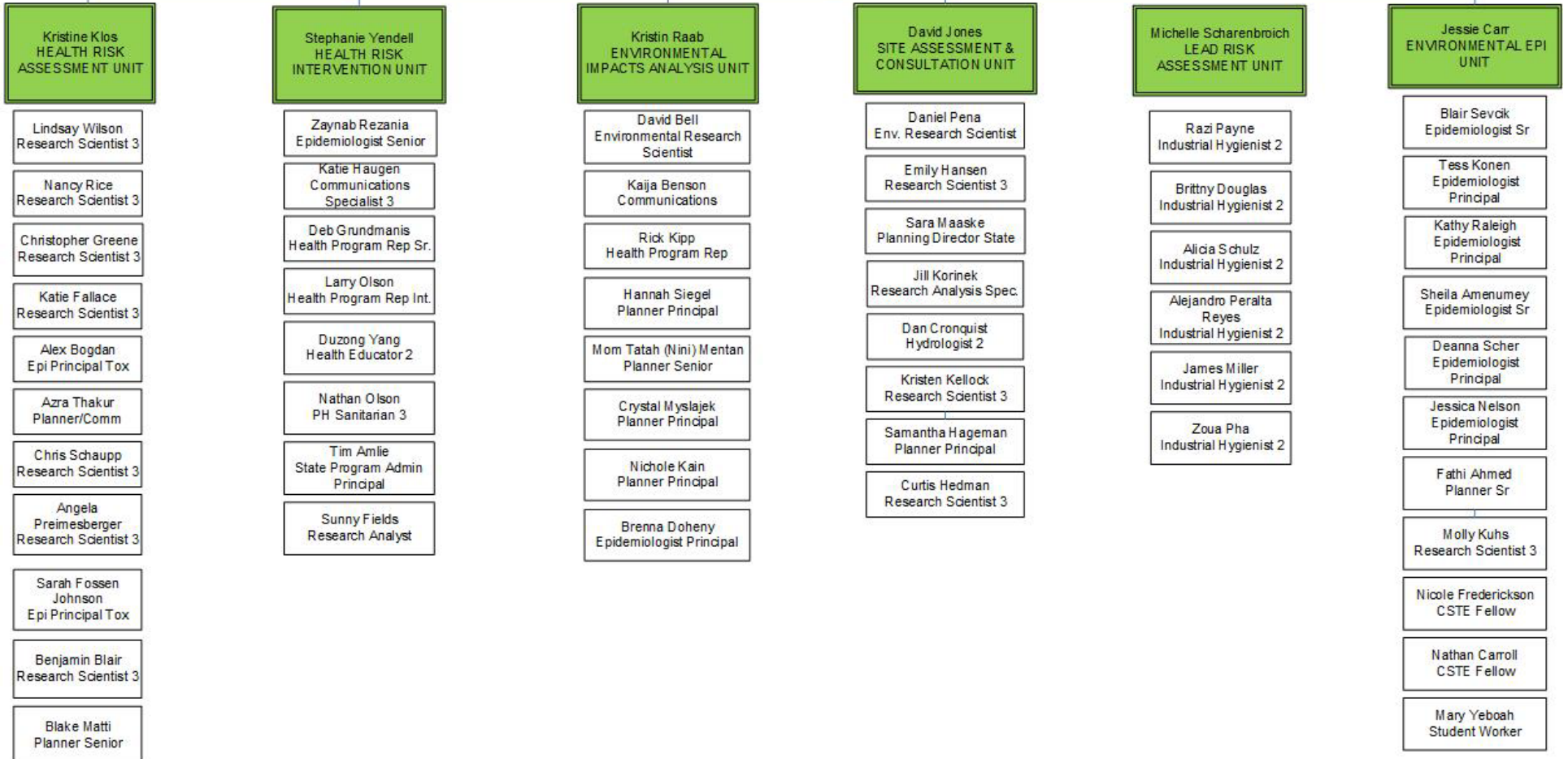


Environmental Surveillance and Assessment Section
Minnesota Department of Health
Division of Environmental Health

Stephanie Drier
Environmental Health Manager



Environmental Surveillance and Assessment Section Organizational Chart

This is the org chart for the Environmental Surveillance and Assessment Section in the Environmental Health Division of the Minnesota Department of Health.

Manager's Office

Stephanie Drier is the Environmental Health Manager, with six-unit supervisors directly reporting to her.

- Manager will have six-unit supervisors directly reporting to them.

Health Risk Assessment Unit

The first unit is the Health Risk Assessment Unit, supervised by Kristine Klos, Research Scientist Supervisor 2. Kris supervises the following staff:

- Lindsay Wilson, Research Scientist 3
- Nancy Rice, Research Scientist 3
- Christopher Greene, Research Scientist 3
- Katie Fallace, Research Scientist 3
- Alex Bogdan, Epidemiologist Principal Toxicologist
- Azra Thakur, Planner/Communicator
- Chris Schaupp, Research Scientist 3
- Angela Preimesberger, Research Scientist 3
- Sarah Fossen Johnson, Epidemiologist Principal Toxicologist
- Benjamin Blair, Research Scientist 3
- Blake Matti – Planner Senior

Health Risk Intervention Unit

The second unit is the Health Risk Intervention Unit, supervised by Stephanie Yendell, Epidemiologist Supervisor Senior. Stephanie supervises the following staff:

- Zaynab Rezania, Epidemiologist Senior
- Katie Haugen, Communications Specialist 3
- Deb Grundmanis, Health Program Representative Senior
- Larry Olson, Health Program Representative Intermediate
- Duzong Yang, Health Educator 2
- Nathan Olson, Public Health Sanitarian 3
- Tim Amlie, State Program Administrator Principal
- Sunny Fields, Research Analyst

Environmental Impact Analysis Unit

The third unit is the Environmental Impact Analysis Unit, supervised by Kristin Raab, Research Scientist Supervisor 2. Kristin supervises the following staff:

- David Bell, Environmental Research Scientist
- Kaija Benson, Communications Specialist 3
- Rick Kipp, Health Program Representative
- Hannah Siegel, Planner Principal
- Mom Tatah (Nini) Mentan, Planner Senior
- Crystal Myslajek, Planner Principal
- Nicole Kain, Planner Principal
- Brenna Doheny, Epidemiologist Principal

Site Assessment and Consultation Unit

The fourth unit is the Site Assessment & Consultation Unit, supervised by David Jones, Research Scientist Supervisor 2. David supervises the following staff:

- Daniel Pena, Environmental Research Scientist
- Emily Hansen, Research Scientist 3
- Sara Maaske, Planning Director State
- Jill Korinek, Research Analysis Specialist
- Dan Cronquist, Hydrologist 2
- Kristen Kellock, Research Scientist 3
- Samantha Hageman, Planner Principal
- Curtis Hedman, Research Scientist 3

Lead Risk Assessment Unit

The fifth unit is the Lead Risk Assessment Unit, supervised by Michelle Scharenbroich, Environmental Health Scientist Supervisor. Michelle supervises the following staff:

- Razi Payne, Industrial Hygienist 2
- Brittny Douglas, Industrial Hygienist 2
- Alicia Schulz, Industrial Hygienist 2
- Alejandro Peralta Reyes, Industrial Hygienist 2
- James Miller, Industrial Hygienist 2
- Zoua Pha, Industrial Hygienist 2

Environmental Epi Unit

The sixth unit is the Environmental Epi Unit, supervised by Jessie Carr, Environmental Health Scientist Supervisor. Jessie supervises the following staff:

ENVIRONMENTAL SURVEILLANCE AND ASSESSMENT SECTION ORGANIZATIONAL
CHART

- Blair Sevcik, Epidemiologist Senior
- Tess Konen, Epidemiologist Principal
- Kathy Raleigh, Epidemiologist Principal
- Sheila Amenumey, Epidemiologist Senior
- Deanna Scher, Epidemiologist Principal
- Jessica Nelson, Epidemiologist Principal
- Fathi Ahmed, Planner Senior
- Molly Kuhs, Research Scientist 3
- Nicole Frederickson, CSTE Fellow
- Nathan Carroll, CSTE Fellow
- Mary Yeboah, Student Worker

Minnesota Department of Health
Environmental Surveillance and Assessment Section
625 N Robert St
St. Paul, MN 55164
www.health.state.mn.us

Rev 01/22/26

To obtain this information in a different format, call: 651-201-5000. Printed on recycled paper.