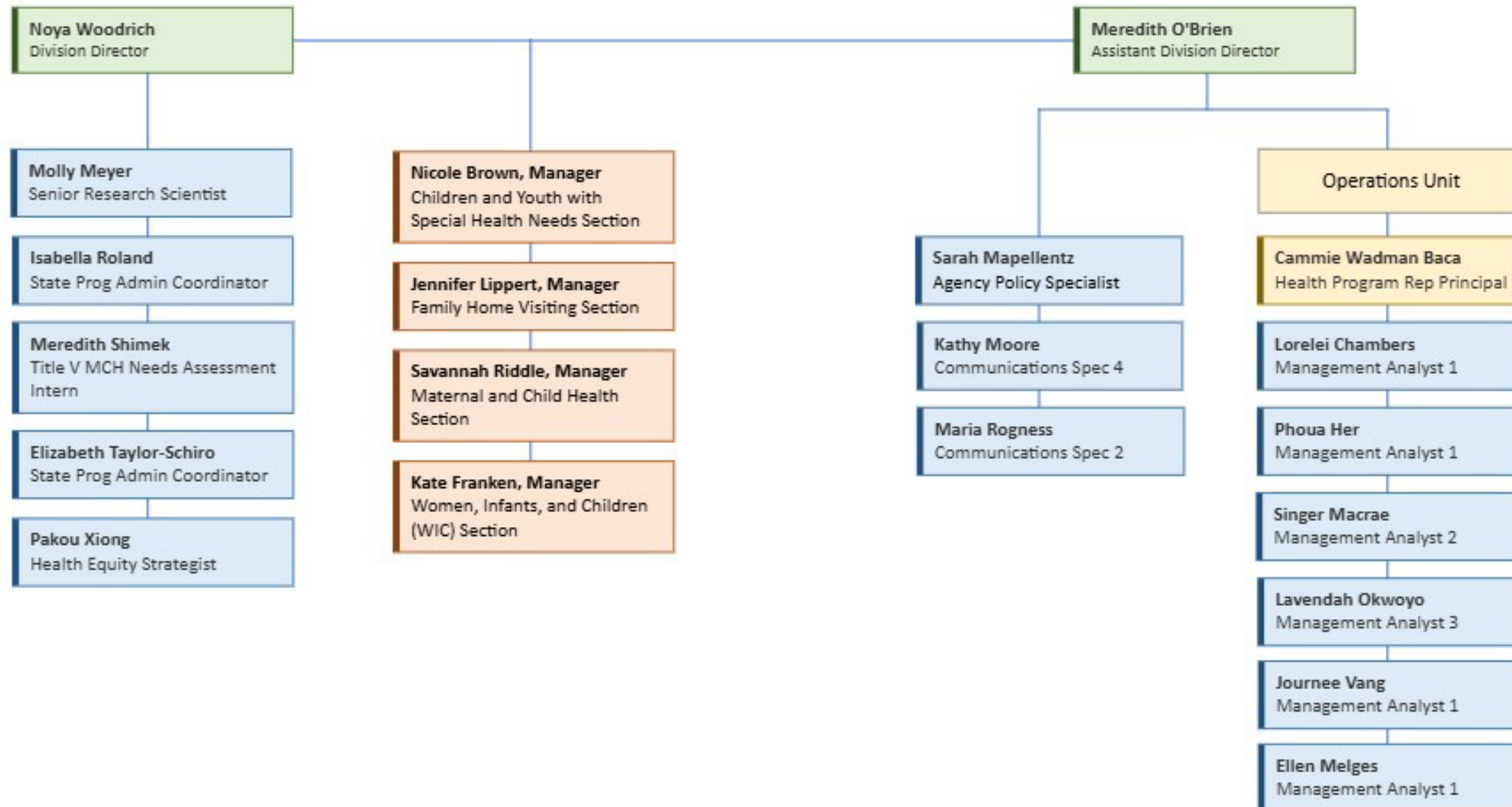


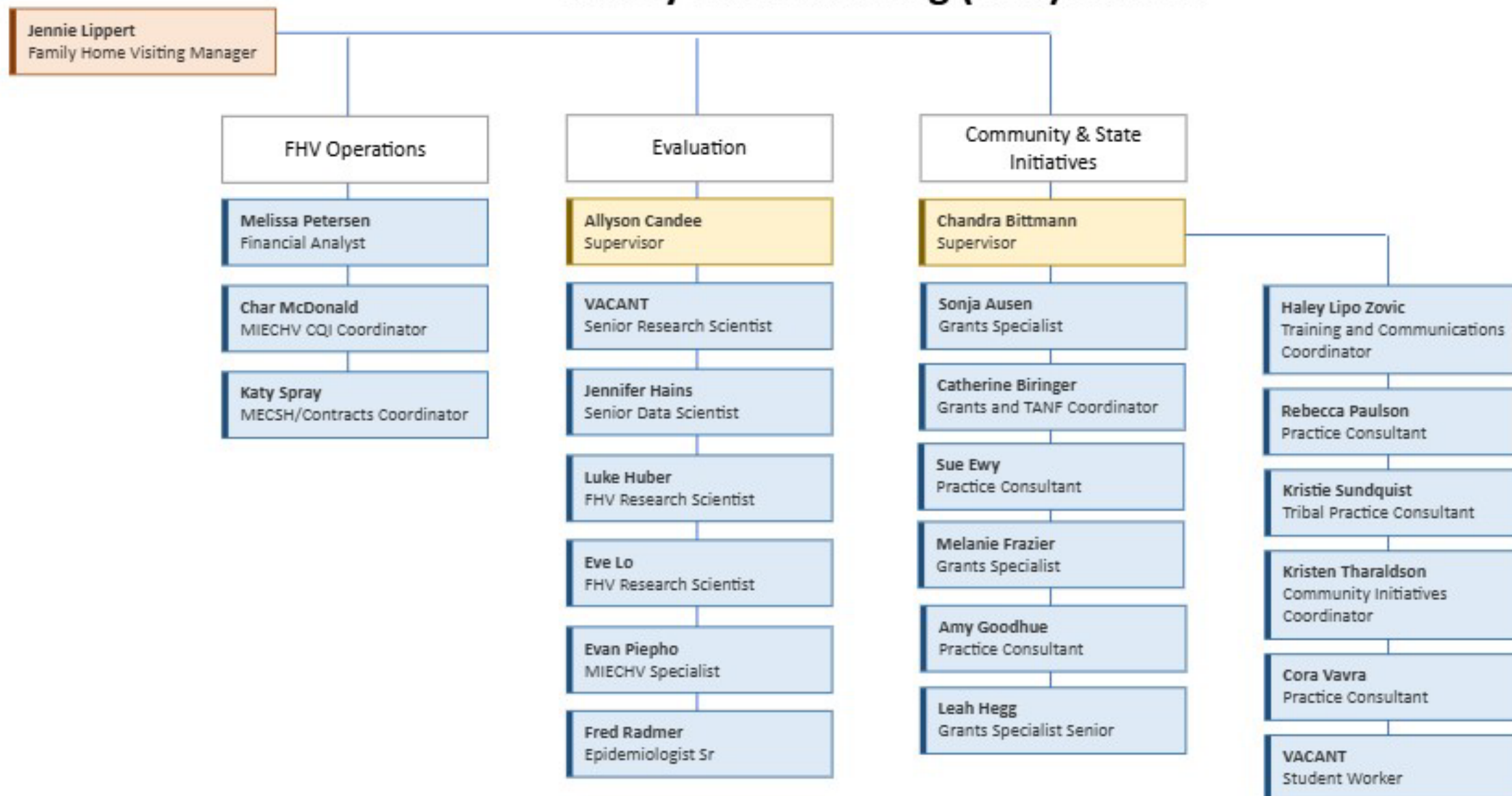
## Child and Family Health Division Organizational Chart



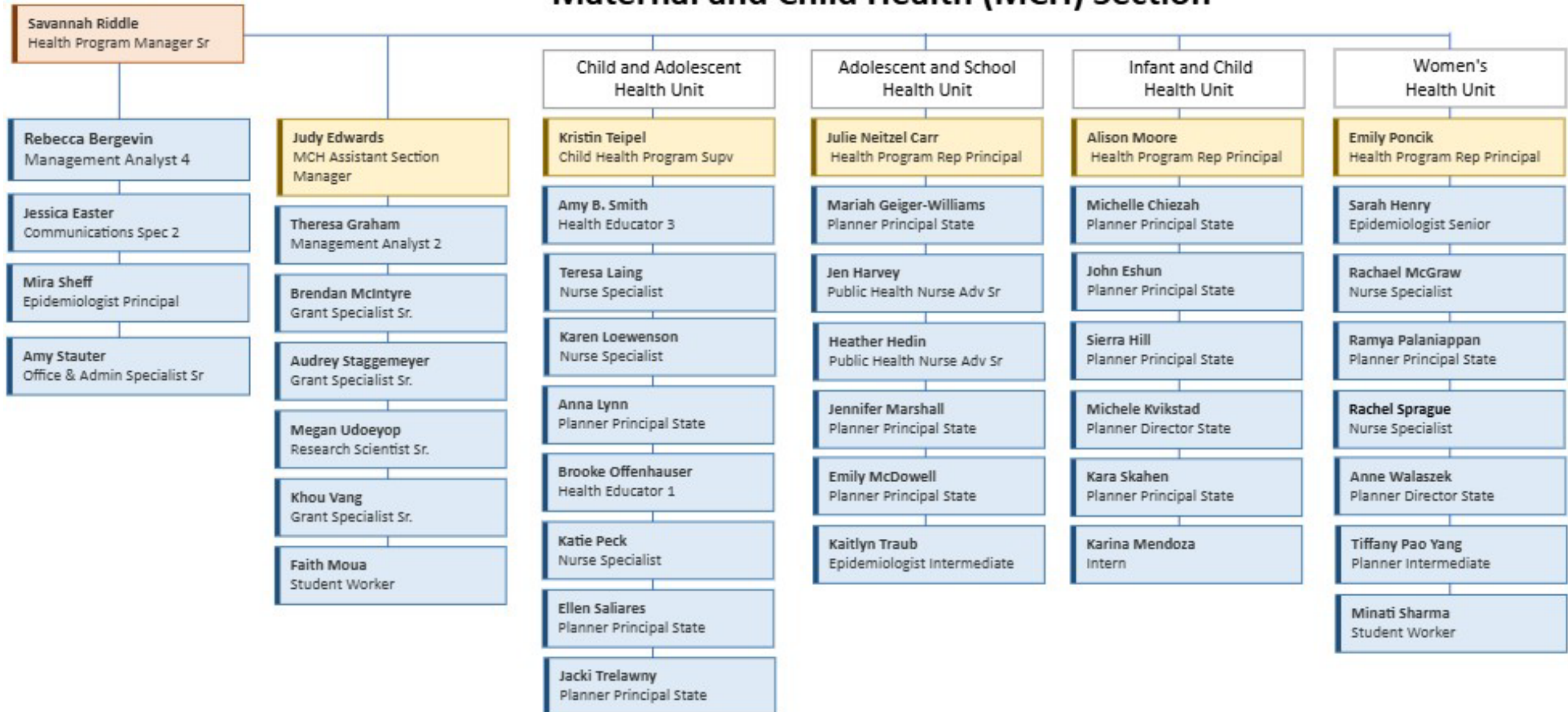
## Children and Youth with Special Health Needs (CYSHN) Section



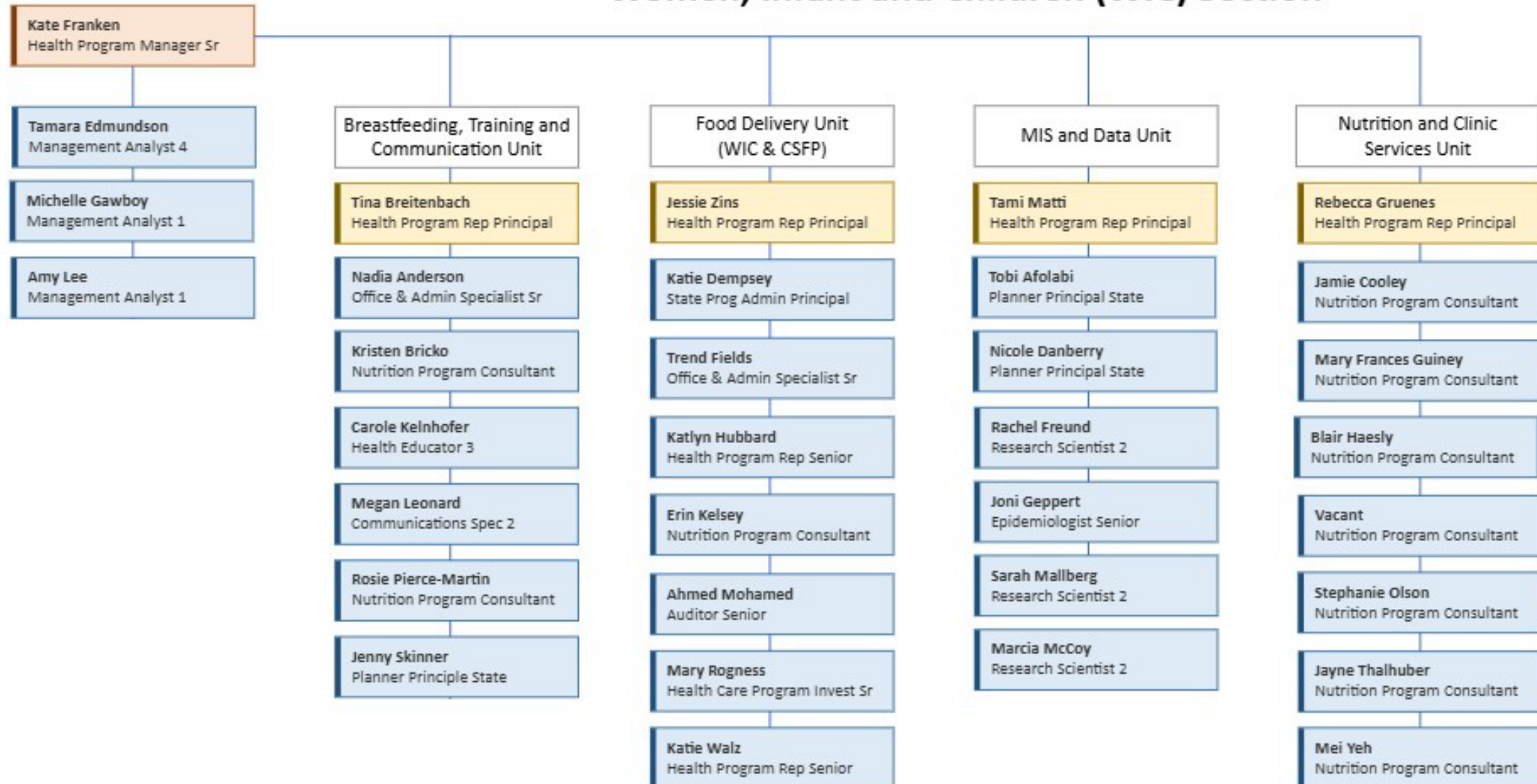
## Family Home Visiting (FHV) Section



## Maternal and Child Health (MCH) Section



## Women, Infant and Children (WIC) Section



## Child and Family Health Division Organizational Chart

**JANUARY 2026**

This is the text version of the Division organizational chart for the Child & Family Health Division of the Minnesota Department of Health.

### Director's office

Noya Woodrich is the Division Director. Reporting directly to the Division Director are, Molly Meyer, Senior Research Scientist, Isabella Roland, State Prog Admin Coordinator, Meredith Shimek, Title V MCH Needs Assessment Intern, Elizabeth Taylor-Schiro, State Program Admin Coordinator, and Pakou Xiong, Health Equity Strategist. Nicole Brown, Children and Youth with Special Health Needs Section Manager, Jennifer Lippert, Family Home Visiting Section Manager, Savannah Riddle, Maternal and Child Health Section Manager, and Kate Franken, Women, Infant and Children Section Manager. Meredith O'Brien, Assistant Division Director. Reporting directly to the Assistant Division Director are Sarah Mapellentz, Agency Policy Specialist, Kathy Moore, Communication Spec 4, Maria Rogness, Communication Spec 2, and Cammie Wadman Baca, Operations Unit Supervisor (Health Program Rep Principal), who supervises Phoua Her, Management Analyst 1, Singer Macrae, Management Analyst 2, Ellen Melges, Management Analyst 1, Lavendah Okwoyo, Management Analyst 3, and Journee Vang, Management Analyst 1.

### Children and Youth with Special Health Needs (CYSHN) section

Nicole Brown is the CYSHN Section Manager. Reporting directly to the Section Manager are Anna Lintelmann, Research Scientist 3, Matt Hertzog-Rundle, Research Scientist 2, and four-unit supervisors listed below.

- Birth Defects Monitoring and Analysis Unit, Barbara Frohnert, Supervisor. Reporting to the Unit Supervisor is Rebecca Barclay, Med Red Tech 1, Sook Ja Cho, Epidemiologist Principal, Melissa Getschel, Med Rec Tech 1, Michele Hort, Health Program Rep Intermediate, Allison Olson-Orth, Med Rec Tech 1, Karen Peterson, Public Health Nurse Adv Senior, Rebecca Thom, Epidemiologist Intermediate, and Jasmin Wenigha, Epidemiologist Senior.
- Longitudinal Follow-up Unit, Jennifer Hauser, Supervisor. Reporting to the Unit Supervisor is Lexie Barber, Epidemiologist Senior, Kristi Bentler, Public Health Nurse Adv Senior, Darcia Dierking, State Prog Admin Coordinator, Sara Lammert, Epidemiologist Senior, Gina Liverseed, Nurse Specialist, Amanda Maresh, Public Health Nurse Adv Senior, Heather Pint, Public Health Nurse Adv Senior, and Bridget Walde, Planner Senior.
- Outreach and Prevention Unit, Vacant, Jennifer Heath, Child Health Program Supervisor. Reporting to the Unit Supervisor is Haley Bice, Communication Specialist 2, Karmen Dippmann, Planner Principal State, Paige Fairchild, Epidemiologist Senior, Venessa Heiland, Health Program Rep Intermediate, Dana Janowiak, PHN Adv Senior, Sandy Triemert, Office & Admin Spec Senior, Kayli Tulkki, Nurse Specialist, and Cara Weston, Health Program Rep Intermediate.

## CHILD AND FAMILY HEALTH ORGANIZATIONAL CHART

- Systems Transformation Unit, Sarah Dunne, Supervisor. Reporting to the Unit Supervisor is J.P.Mahoehney, Public Health Nurse Adv Senior, Planner Principal State, Alyssa Greene, Planner Principal State, Jessica Mattson, Planner Principal State, Heather Stillwell, Planner Director State, Yasmin Yassin, Research Scientist 2, and Grace Marohn, Student Worker Para Professional Sr.

### Family Home Visiting (FHV) section

Jennifer Lippert is the FHV Section Manager. The FHV Operations Unit (below) report directly to the FHV Section Manager as do two-Unit Supervisors listed below.

- FHV Operations Unit. The following staff in this unit report directly to the FHV Section Manager: Melissa Petersen, Management Analyst 4, Char McDonald, MIECHV CQI Coordinator, Katy Spray, MECOSH/Contracts Coordinator.
- Evaluation Unit, Allyson Candee, Supervisor. Reporting to the Unit Supervisor is Jennifer Hains, Research Scientist 3, Luke Huber, Research Scientist 2, Eve Lo, Research Scientist 2, Char McDonald, Planner Principal State, Evan Piepho, Research Analysis Specialist, and Fred Radmer, Epidemiologist Senior. A Senior Research Scientist position is VACANT.
- Community & State Initiatives Unit, Chandra Bittmann, Supervisor. Reporting to the Unit Supervisor is Sonja Ausen, Grants Specialist, Catherine Biringier, Grants and TANF Coordinator, Sue Ewy, Practice Consultant, Melanie Frazier, Grants Specialist, Amy Goodhue, Practice Consultant, Leah Hegg, Grants Specialist Senior, Haley Lipo Zovic, Training and Communications Coordinator, Rebecca Paulson, Practice Consultant, Kristie Sundquist, Tribal Practice Consultant, Kristen Tharaldson, Community Initiatives Coordinator, Cora Vavra, Practice Consultant, VACANT, Student Worker.

### Maternal and Child Health (MCH) section

Savannah Riddle is the MCH Section Manager. Reporting directly to the Section Manager is Rebecca Bergevin, Management Analyst 4, Jessica Easter, Communications Spec 2, Mira Sheff, Epidemiologist Principal, Amy Stauter, Office & Admin Spec Senior, Judy Edwards, MCH Assistant Section Manager, and three-Unit Supervisors listed below.

- Judy Edwards, MCH Assistant Section Manager. Reporting to the MCH Assistant Section Manager is Theresa Graham, Management Analyst 2, Brendan McIntyre, Grant Specialist Sr., Audrey Staggemeyer, Grant Specialist Sr., Megan Udoeyop, Research Scientist Sr., Khou Vang, Grant Specialist Sr., and Faith Moua, Student Worker.
- Child and Adolescent Health Unit, Kristin Teipel, Child Health Program Supervisor. Reporting to Unit Supervisor is Amy B. Smith, Health Educator 3, Teresa Laing, Nurse Specialist, Karen Loewenson, Nurse Specialist, Anna Lynn, Planner Principal State, Brooke Offenhauser, Health Educator 1, Katie Peck, Nurse Specialist, Ellen Saliars, Planner Principal State, and Jacki Trelawny, Planner Principle State.
- Adolescent and School Health Unit, Julie Neitzel Carr, Health Program Rep Principal. Reporting to Unit Supervisor is Mariah Geiger-Williams, Planner Principal State, Jen Harvey, Public Health Nurse Adv Senior, Heather Hedin, Public Health Nurse Adv Senior, and Jennifer Marshall, Planner Principal State, Emily McDowell, Planner Principal State, and Kaitlyn Traub, Epidemiologist Principal.

## CHILD AND FAMILY HEALTH ORGANIZATIONAL CHART

- Infant and Child Health Unit, Alison Moore, Health Program Rep Principal. Reporting to Unit Supervisor is Michelle Chiezah, Planner Principal State, John Eshun, Planner Principal State, Sierra Hill Planner Senior, Michele Kvikstad, Planner Director State, Kara Skahen, Planner Principal State, and Karen Mendoza, Intern.
- Women's Health Unit, Emily Poncik, Supervisor. Reporting to Unit Supervisor is Sarah Henry, Epidemiologist Senior, Rachael McGraw, Nurse Specialist, Ramya Palaniappan, Planner Principal State, Rachel Sprague, Nurse Specialist, Anne Walaszek, Planner Director State, Tiffany Pao Yang, Planner Intermediate, and Minati Sharma, Student Worker.

### Women, Infant and Children (WIC) section

Kate Franken is the WIC Section Manager. Reporting directly to the Section Manager is the Supplemental Nutrition Program (SNP) Unit staff. Tamara Edmundson, Management Analyst 4, Michelle Gawboy, Management Analyst 1, and Amy Lee, Management Analyst 1, and four-Unit Supervisors listed below.

- Breastfeeding, Training and Communication Unit, Tina Breitenbach, Health Program Rep Principal. Reporting to the Unit Supervisor is Nadia Anderson, Office & Admin Specialist Senior, Kristen Bricko, Nutrition Program Consultant, Carole Kelnhofer, Nutrition Program Consultant, Megan Leonard, Communication Spec 2, Rosie Pierce-Martin, Nutrition Program Consultant, and Jenny Skinner, Health Program Rep Senior.
- Food Delivery Unit (WIC and CSFP), Jessie Zins, Supervisor. Reporting to the Unit Supervisor is Katie Dempsey, State Prog Admin Principal, Trend Fields, Office & Admin Specialist Senior, Katlyn Hubbard, Health Program Rep Senior, Erin Kelsey, Nutrition Program Consultant, Ahmed Mohamed, Auditor Senior, Mary Rogness, Health Care Program Invest Senior, and Katie Walz, Health Program Rep Senior.
- MIS and Data Unit, Tami Matti, Health Program Rep Principal. Reporting to the Unit Supervisor is Tobi Afolabi, Planner Principal State, Nicole Danberry, Planner Principal State, Rachel Freund, Research Scientist 2, Joni Geppert, Epidemiologist Senior, Sarah Mallberg, Research Scientist 2, and Marcia McCoy, Research Scientist 2.
- Nutrition and Clinic Services Unit, Rebecca Gruenes, Health Program Rep Principal. Reporting to the Unit Supervisor are eight Nutrition Program Consultants, Jamie Cooley, Mary Frances Guiney, Blair Haesly, Stephanie Olson, Jayne Thalhuber, and Mei Yeh.

Minnesota Department of Health  
Child & Family Health  
625 Robert St. N.  
PO Box 64975  
St. Paul, MN 55164-0975  
651-201-3589  
[health.cfhcommunications@state.mn.us](mailto:health.cfhcommunications@state.mn.us)  
[www.health.state.mn.us](http://www.health.state.mn.us)