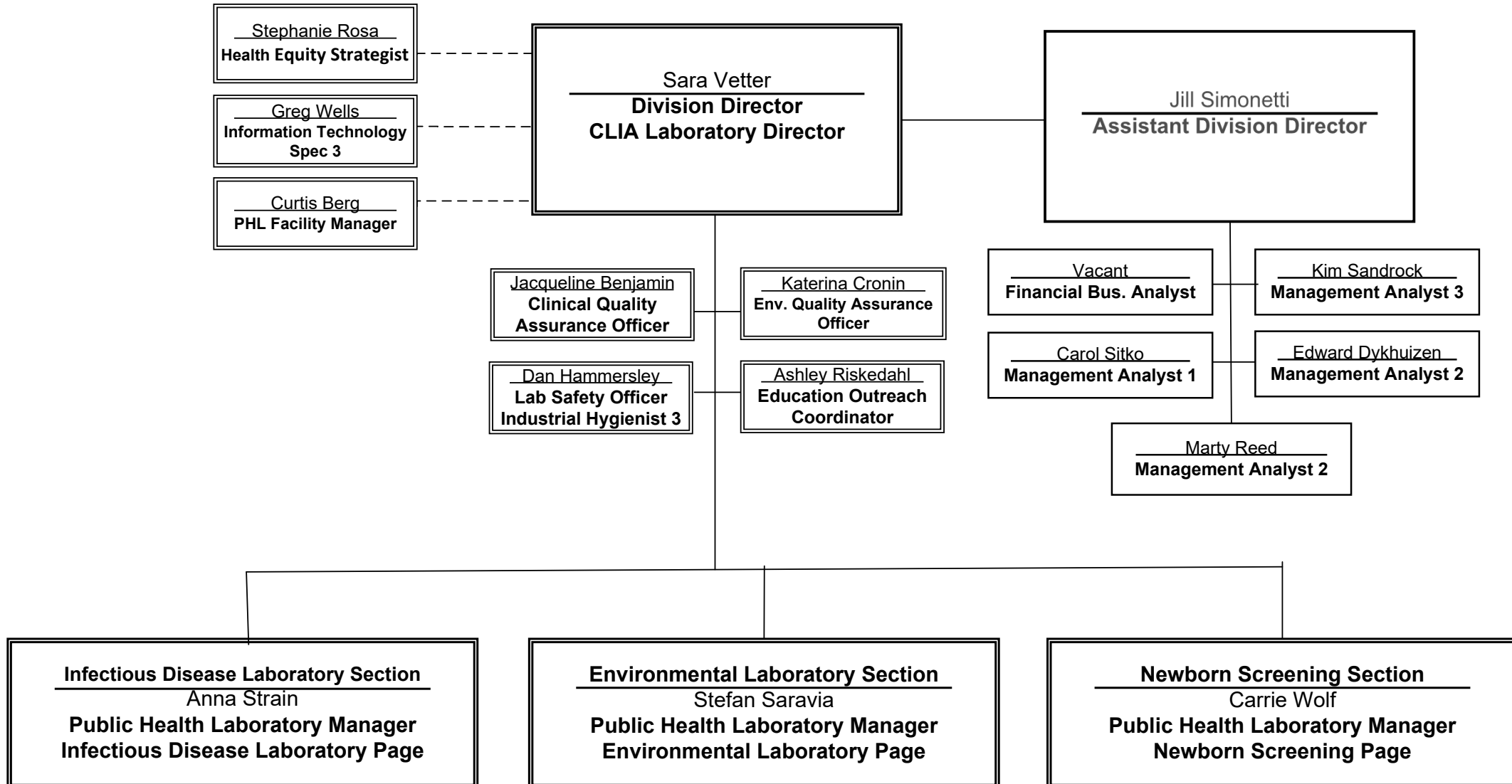
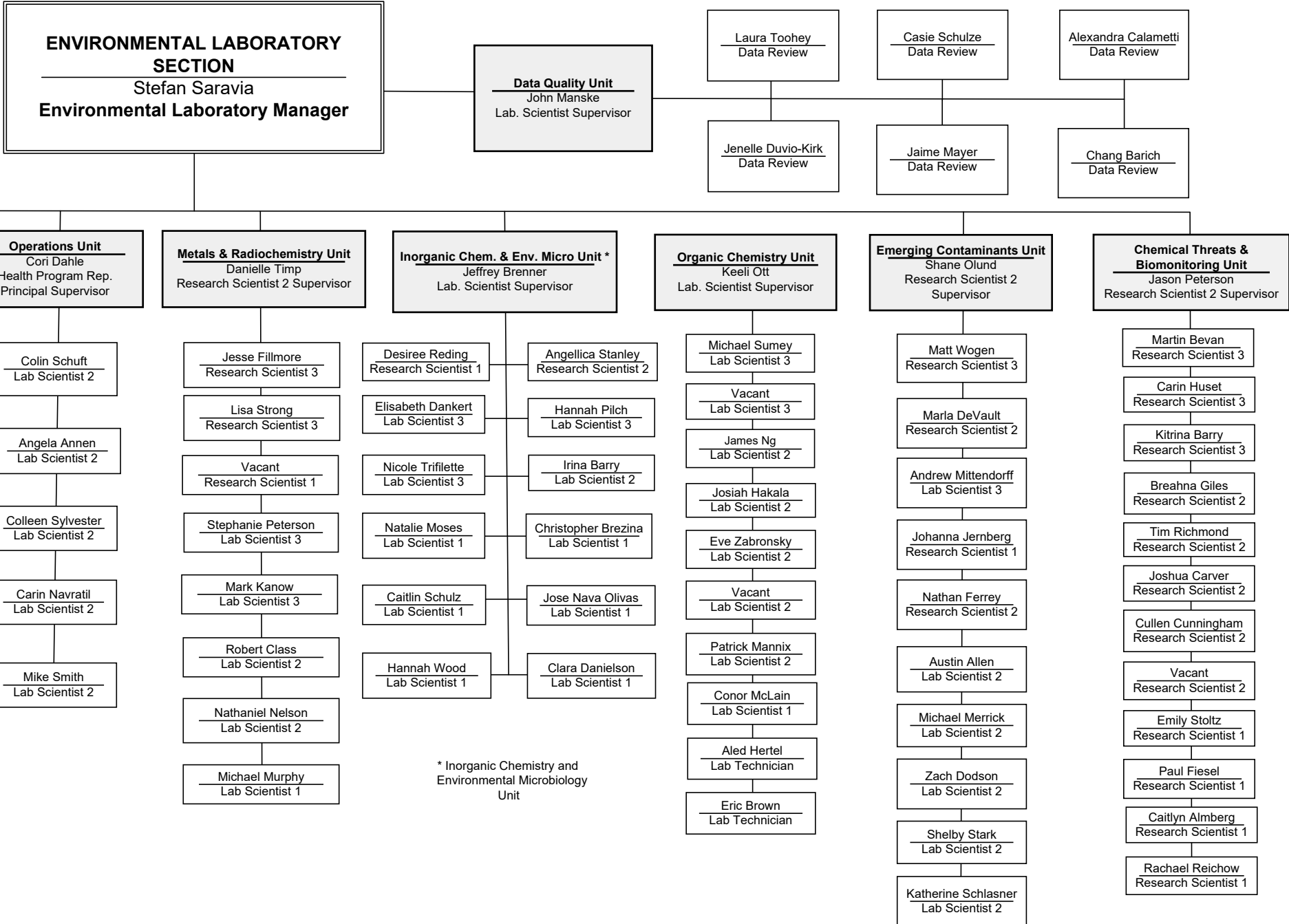


Minnesota Department of Health Public Health Laboratory Division

March 2026

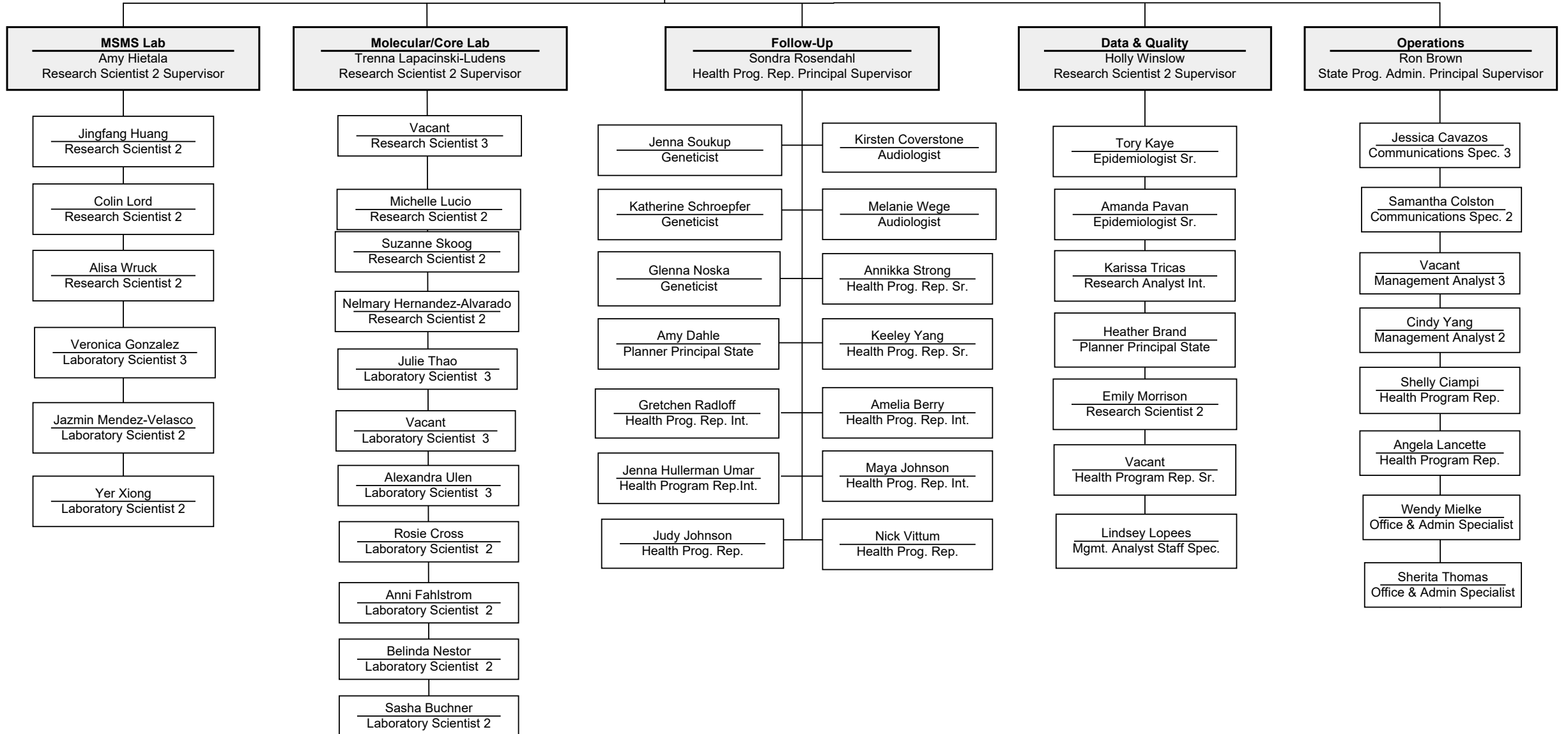


March 2026



March 2026

NEWBORN SCREENING SECTION
Carrie Wolf
Newborn Screening Manager



Public Health Laboratory Division Organizational Chart

This is the text version of the Division organizational chart for the Public Health Laboratory of the Minnesota Department of Health.

Director's Office:

Sara Vetter is the Division Director and CLIA Laboratory Director. The Section Managers, Carrie Wolf, Newborn Screening Section Manager; Stefan Saravia, Environmental Laboratory Section; Anna Strain, Infectious Disease Laboratory Section; Dan Hammersley, Lab Safety Officer (Industrial Hygienist 3); Katerina Cronin, Environmental Laboratory Quality Assurance Officer; Jaqueline Benjamin, Clinical Laboratory Quality Assurance Officer; Ashley Riskedahl, Education Outreach Coordinator; and Jill Simonetti, Assistant Division Director; report to the Director. Stephanie Rosa, Health Equity Specialist, reports to the Office of Health Equity. Greg Wells, Information Technology Specialist 3; reports to MNIT. Curtis Berg, PHL Facility Manager, reports to MDH Facilities Management. Jill Simonetti is the Assistant Division Director. Vacant, Financial Business Analyst; Kim Sandrock, Management Analyst 3; Edward Dykhuizen, Management Analyst 2; Marty Reed, Management Analyst 2; and Carol Sitko, Management Analyst 1; report directly to the Assistant Division Director.

Infectious Disease Laboratory Section:

Anna Strain is the Infectious Disease Laboratory Section Manager: Vacant; Program Administrator Principal; Dianna Wegener, Account Officer Senior; and Eric Lundquist, Biosafety Coordinator; report directly to the Infectious Disease Laboratory Manager. The seven Unit Supervisors listed below; also report directly to the Infectious Disease Manager:

- Michael Valentine, Lab. Scientist Supervisor, Immunology and Virology Unit: Gongping Liu, Research Scientist 3; Jennifer Palm, Research Scientist 2; Sarah Bistodeau, Lab. Scientist 3; Jamie Christensen, Lab. Scientist 3; Kathryn Harry, Lab. Scientist 3; Mary Bowman, Lab. Scientist 3; Jackie Peterson, Lab. Scientist 3; Dawn Anderson, Lab. Scientist 2, Lacey Marshall Lund, Lab. Scientist 2; Emma Boehm, Lab. Scientist 2; and Vacant, Lab. Scientist 1.
- Victoria Lappi, Lab. Scientist Supervisor, Infectious Disease Operations Unit: Vacant, Management Analyst 2; Vacant, Lab. Scientist 3; Brooke Winberg, Lab. Scientist 2; Rebecca Gagnon, Lab. Scientist 2; Vacant, Lab. Scientist 2; Ashley Barington, Lab. Scientist 2; Emily Goman, Lab. Scientist 2; Vacant, Lab. Scientist 2 Temp.; Surakchya Koirala Pokharel, Lab. Scientist 1; Vacant, Lab. Scientist 1; and Silje Bergland Drarvik; Lab. Scientist 1.
- Jisun Haan, Lab. Scientist Supervisor, Enterics Unit: Vacant, Research Scientist 3; Elizabeth Cebelinski, Research Scientist 2; Melanie Orth, Lab. Scientist 3; Netsanet Bekele, Lab. Scientist 3; Nicole Podemski, Lab. Scientist 3; Raymond Erickson, Lab. Scientist 3; Selina Jawahir, Lab. Scientist 3; Geri Salo, Lab. Scientist 2; Paul Webb, Lab. Scientist 2; Brooke Draxler, Lab. Scientist 2; Vacant, Lab. Scientist 2; and Haejin Hwang-Hinz, APHL Bioinformatics Fellow.
- Aaron M.T. Barnes, Lab. Scientist Supervisor, Emergency Preparedness and Response Unit: Brigid Bollweg, Lab. Scientist 3; Stephanie Eng, Lab. Scientist 3; Emily Yarosz, Lab. Scientist 3; Nicolle Leska, Lab. Scientist 3; Rosemary Collins, Lab. Scientist 3; Haley Ersfeld, Lab. Scientist 3; Amanda Foss, Lab. Scientist 2; and Bret Schothorst, State Program Administrator Principal.
- Ginny Dobbins, Research Scientist 2 Supervisor, Health Informatics Unit: Peter Schmit, Research Scientist 3; Geoffrey Mbinda, Research Scientist 2; Jason Wotton, Research Scientist 2; Vitan Chopra, Research Scientist 2; Dan Stets; Management Analyst 3; Joshua Machtemes, Management Analyst 2.

- Paula Snippes Vagnone, Lab. Scientist Supervisor, Microbiology Unit: Jennifer Dale, Research Scientist 3; Annastasia Gross, Research Scientist 2; Vacant, Research Scientist 2; Jill; Fischer, Research Scientist 2; Annah Schneider, Lab. Scientist 3; Chrissy Yang, Lab. Scientist 3; Scott Fisher, Lab. Scientist 3; John Kaiyalethe, Lab. Scientist 3; Bonnie Weber, Lab. Scientist 3; Bethany Olander, Lab. Scientist 3; Amanda Ericson, Lab. Scientist 3; Sydney Tracey, Lab. Scientist 3; Goal Chang, Lab. Scientist 3, Alexys Ruckdaschel, Lab. Scientist 2; Bradley Craft, Lab. Scientist 2; Tucker Henkes, Lab. Scientist 1; Katlin Her, Student Worker Para; and Braden Imse, APHL AR Fellow.
- Sarah Bwabye Namugenyi, Lab. Scientist Supervisor, Sequencing and Bioinformatics Unit: Dan Evans, Research Scientist 3; Jacob Garfin, Research Scientist 3; Henry Kunerth, Research Scientist 2; Mel Anacker, Research Scientist 2; Sarah Bwabye Namugenyi, Research Scientist 2; Matthew Plumb, Lab. Scientist 3; Kelly Pung, Lab. Scientist 3; Alyssa Mondelli, Lab. Scientist 3; Jessica Jencks, Lab. Scientist 3; and Laura Bohnker-Voels, Lab. Scientist 2.

Environmental Laboratory Section:

Stefan Saravia is the Environmental Laboratory Section Manager: Eight Unit Supervisors listed below report directly to the Environmental Laboratory Manager:

- John Manske, Supervisor, Data Quality Unit: Laura Toohey, Data Review; Jenelle Duvio-Kirk, Data Review; Jaime Mayer, Data Review; Casie Schulze, Data Review; Alexandra Calametti, Data Review; and Chang Barich, Data Review.
- Keeli Ott, Lab. Scientist Supervisor, Organic Chemistry Unit: Michael Sumey, Lab. Scientist 3; Vacant, Lab. Scientist 3; James Ng, Lab. Scientist 2; Eve Zabronsky, Lab. Scientist 2; Vacant, Lab. Scientist 2; Josiah Hakala, Lab. Scientist 2; Patrick Mannix, Lab. Scientist 2; Conor McLain, Lab. Scientist 1: Aled Hertel, Lab. Technician; and Eric Brown, Lab. Technician.
- Cori Dahle, Health Program Rep. Principal Supervisor, Environmental Laboratory Operations Unit: Colin Schuft, Lab. Scientist 2; Angie Annen, Lab. Scientist 2; Carin Navratil, Lab. Scientist 2; Colleen Sylvester, Lab. Scientist 2; and Mike Smith, Lab. Scientist 2.
- Danielle Timp, Research Scientist 2, Supervisor, Metals and Radiochemistry Unit: Jesse Fillmore, Research Scientist 3; Lisa Strong, Research Scientist 3; Vacant, Research Scientist 1; Stephanie Peterson, Lab. Scientist 3; Mark Kanow, Lab. Scientist 3; Robert Class, Lab. Scientist 2; Nathaniel Nelson, Lab. Scientist 2; and Michael Murphy, Lab. Scientist 1.
- Jeffrey Brenner, Lab. Scientist Supervisor, Inorganic Chemistry and Environmental Microbiology Unit: Angellica Stanley, Research Scientist 2; Desiree Reding, Research Scientist 1; Elisabeth Dankert, Lab. Scientist 3; Nicole Triffilette, Lab. Scientist 3; Hannah Pilch, Lab. Scientist 3; Irina Barry, Lab. Scientist 2; Natalie Moses, Lab. Scientist 1, Vacant, Lab. Scientist 1; Caitlin Schulz, Lab. Scientist 1; Jose Nava Olivas, Lab. Scientist 1, Christopher Brezina, Lab. Scientist 1; Hannah Wood, Lab Scientist 1; and Clara Danielson, Lab. Scientist 1.
- Mark Lunda, Lab. Scientist Supervisor, Environmental Sample Receiving Unit: Kaylene Nelson, Lab. Scientist 1; Vacant, Lab. Scientist 1; Michael Juair, Customer Service Specialist Senior; Kara Sticht, State Program Admin Tech Specialist; Madelyn Ritter, Lab. Technician; Daniel Macapagal, Lab. Technician; Lindsay Bayerkohler, Lab. Technician; Danielle Pereyra, Lab. Technician; and Chelsea Sobtzak, Lab. Technician.
- Jason Peterson, Research Scientist 2 Supervisor, Chemical Threats and Biomonitoring Unit: Martin Bevan, Research Scientist 3; Carin Huset, Research Scientist 3; Kitrina Barry, Research Scientist 3; Vacant, Research Scientist 2; Breahna Giles, Research Scientist 2; Tim Richmond, Research Scientist 2; Vacant, Research Scientist 2, Joshua Carver, Research Scientist 2; Vacant, Research Scientist 2; Emily Stoltz, Research Scientist 1; Caitlyn Almberg, Research Scientist 1; Rachel Reichow, Research Scientist 1; Danielle Timp, Research Scientist 1; and Paul Fiesel, Research Scientist 1.
- Shane Olund, Research Scientist Supervisor, Emerging Contaminants Unit: Matt Wogen, Research Scientist 3; Marla DeVault, Research Scientist 2; Nathan Ferrey, Research Scientist 2; Johanna Jernberg, Research Scientist 1, Andrew Mittendorff, Lab. Scientist 3; Zach Dodson, Lab. Scientist 2; Shelby Start, Lab. Scientist 2; Austin Allen, Lab. Scientist 2; Michael Merrick, Lab. Scientist 2: and Katie Schlasner, Lab. Scientist 2.

Newborn Screening Program Section:

Carrie Wolf is the Newborn Screening Program Section Manager. The five Unit Supervisors listed below report directly to the Newborn Screening Section Manager.

- Amy Hietala, Research Scientist 2 Supervisor, MSMS Laboratory Unit: Alisha Wruck, Research Scientist 2; Jingfang Huang, Research Scientist 2; Colin Lord, Research Scientist 2; Veronica Gonzalez, Lab. Scientist 3; Yer Xiong, Lab. Scientist 2; and Jazmin Mendez-Velasco, Lab. Scientist 2.
- Trena Lapacinski-Ludens, Research Scientist 2 Supervisor, Molecular and Core Laboratory Unit: Vacant, Research Scientist 3, Michelle Lucio, Research Scientist 2; Suzanne Skoog, Research Scientist 2; Nelmary Hernandez-Alvarado, Research Scientist 2; Julie Thao, Lab. Scientist 3; Vacant, Lab. Scientist 3; Alexandra Ulen, Lab. Scientist 3; Rosie Gross, Lab. Scientist 2; Anni Fahlstrom, Lab. Scientist 2; Belinda Nestor, Lab. Scientist 2; and Sasha Buchner, Lab. Scientist 2.
- Sondra Rosendahl, Health Program Rep. Principal, Supervisor, Newborn Screening Follow-Up Unit: Kirsten Coverstone, Audiologist; Melanie Wege, Audiologist; Glenna Noska , Geneticist, Katherine Schroepfer, Geneticist; Jenna Soukup, Geneticist; Amy Dahle, Planner Principal State; Annika Strong, Health Program Rep. Senior; Keely Yang, Health Program Rep. Senior; Jenna Hullerman Umar; Health Program Rep Intermediate; Amelia Berry, Health Program Rep. Intermediate; Maya Johnson, Health Program Rep. Intermediate; and Gretchen Radloff, Health Program Rep. Intermediate; Judy Johnson, Health Program Rep.; and Nick Vittum, Health Program Rep.
- Holly Winslow, Research Scientist 2 Supervisor, Data & Quality Unit: Amanda Pavan, Epidemiologist Senior; Tory Kaye, Epidemiologist Senior; Karissa Tricas, Research Analyst Intermediate; Heather Brand, Planner Principal State; Emily Morrison, Research Scientist 2; Lindsey Lopees, Management Analyst Staff Specialist; and Vacant, Health Program Rep Sr.
- Ron Brown, State Program Admin. Principal, Supervisor, Newborn Screening Operations Unit: Jessica Cavazos, Communications Specialist 3; Samantha Colston, Communications Specialist 2; Vacant, Management Analyst 3.; Cindy Yang, Management Analyst 2; Angela Lancette, Health Program Rep.; Shelly Ciampi, Health Program Rep.; Sherita Thomas, Office Administrative Specialist; and Wendy Mielke, Office Administrative Specialist.

Public Health Laboratory Division
P.O. Box 64899
St Paul, MN 55164-0899
651-201-5200
health.mdhlab@state.mn.us