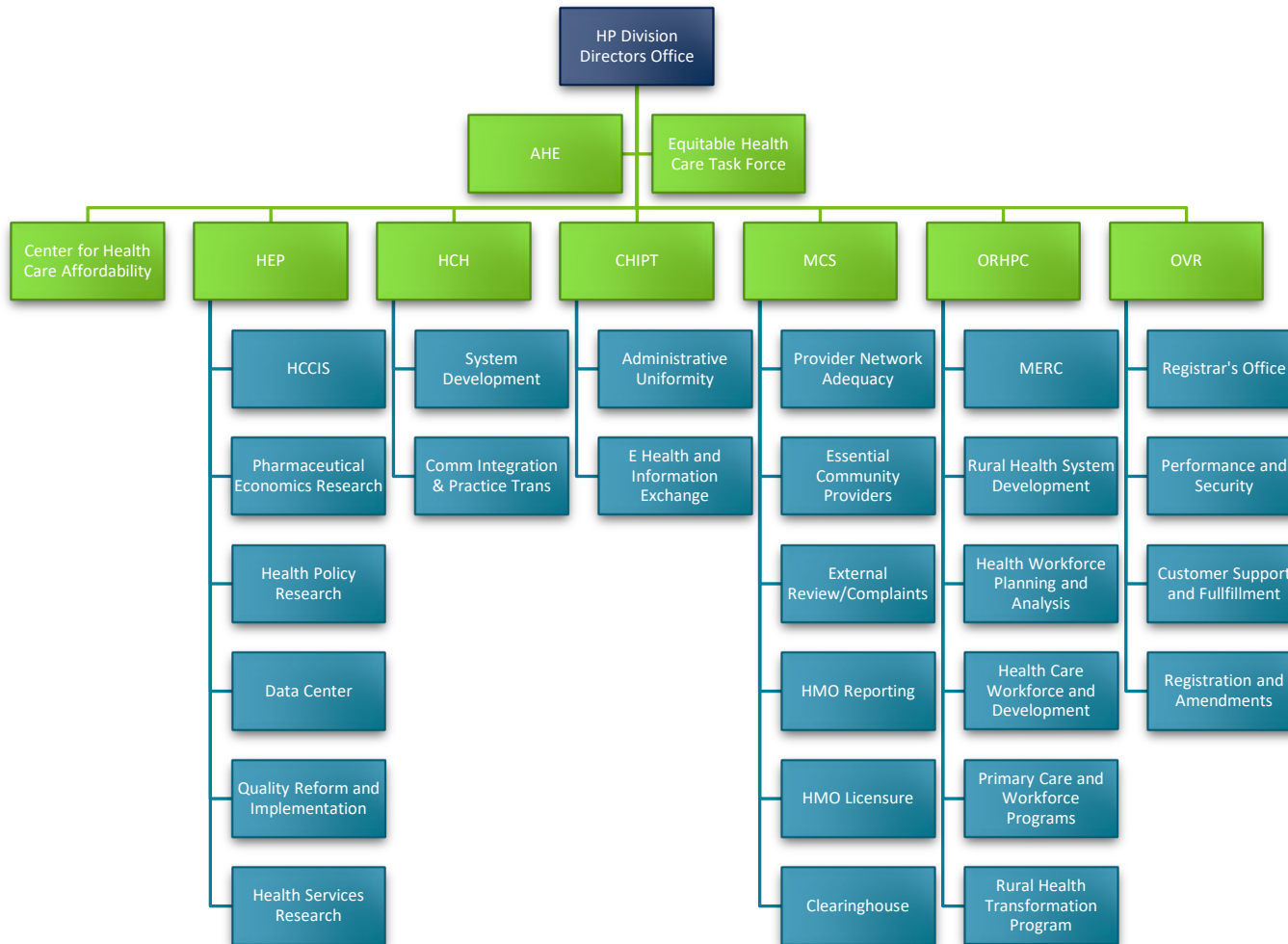


# Health Policy Division Staff and Organization List

MAY 13, 2026



**Table of Contents**

Health Policy Division Staff and Organization List ..... 1

- Division Director’s Office ..... 2
- Adverse Events Reporting (AHE) ..... 2
- Equitable Health Care Task Force ..... 2
- Center for Health Information Policy and Transformation (CHIPT) ..... 2
  - Administrative Uniformity ..... 2
  - E Health and Health Information Exchange ..... 2
- Center for Health Care Affordability ..... 2
- Health Care Homes (HCH) ..... 3
  - System Development ..... 3
  - Community Integration and Practice Transformation ..... 3
- Health Economics Program (HEP) ..... 3
  - Minnesota Health Care Cost Information System (HCCIS) ..... 3
  - Pharmaceutical Economics Research ..... 3
  - Health Policy Research ..... 4
  - Data Center ..... 4
  - Quality Reform Implementation ..... 4
  - Health Services Research ..... 4
- Managed Care Systems (MCS) ..... 4
  - Clearinghouse ..... 5
- Office of Rural Health and Primary Care (ORHPC) ..... 5
  - MERC (Health Care Workforce and Education) ..... 5
  - Rural Health System Development/Trauma ..... 5
  - Health Workforce Planning and Analysis ..... 6
  - Health Care Workforce and Development ..... 6
  - Primary Care and Workforce Programs ..... 6
- Office of Vital Records (OVR) ..... 7
  - Registrar’s Office ..... 7
  - Performance and Security ..... 7
  - Customer Support and Fulfillment ..... 8
  - Registration and Fulfillment ..... 8
- Health Policy MN.IT Services ..... 8

## Division Director's Office

- **Division Director:** Diane Rydrych
- **Assistant Division Directors:** Susan Castellano, Karen Soderberg
  - **Health Policy Specialist:** Tara Borton
  - **Financial Management:**
    - Barb Fischer
  - **Information and Communications Coordinator:** Morgan (Foster) Powers

## Adverse Events Reporting (AHE)

- **Program Director:** Rachel Jokela

## Equitable Health Care Task Force

- **Reports to:** Division Director's Office
  - Denise McCabe
  - Julia Stumpf

## Center for Health Care Affordability

- **Program Director:** Alex Caldwell
  - Elle Talsma Weise

## Center for Health Information Policy and Transformation (CHIPT)

- **Program Manager:** Jennifer Fritz
  - Susie Blake
  - Sarah Shaw

## Administrative Uniformity

- **Supervisor:** Jennifer Fritz
  - Vacant

## E Health and Health Information Exchange

- **Supervisor: Vacant**
  - Bilqis Amatus-Salaam
  - Kari Guida

- Anne Schloegel

## Health Care Homes (HCH)

- **Program Manager:** David Kurtzon

## System Development

- **Supervisor:** Tina Peters
  - Lisa Behr
  - Heidi Carlson
  - Jennifer Strickland
  - Amanda Ubongen

## Community Integration and Practice Transformation

- **Supervisor:** Vacant
  - Catherine Johnson
  - XP Lee

## Health Economics Program (HEP)

- **Program Director:** Stefan Gildemeister
- **Program Deputy Director:** Cara Bailey
  - Kristen Ackert
  - Diane Hammond
  - Kelsey Schaenzer
  - Joseph Lee

## Minnesota Health Care Cost Information System (HCCIS)

- **Supervisor:** Cara Bailey
  - Tracy Johnson

## Pharmaceutical Economics Research

- **Supervisor:** Annelisa Steeber
  - Margaret Abraham-Kaz (Contractor)
  - Alissa Bolz (Contractor)
  - Margaret Darling
  - Sean MacDonell

- Abby Vogel
- Jodi Drinkwine (**PEPR Supervisor**)
  - David Raatz
  - Madison Stangl

## Health Policy Research

- **Supervisor:** Julia Wacloff
  - Kelsey Besse
  - Renee Saarela
  - Michelle Wilson
  - Christine Williams

## Data Center

- **Supervisor:** Karl Fenstrom
  - Michael Adams
  - Beth Bowerman
  - Erinn Sanstead

## Quality Reform Implementation

- **Supervisor:** Denise McCabe
  - Rachel Cahoon
  - Sarah Evans
  - David Hesse
  - Kelsey Kannenberg

## Health Services Research

- **Director:** Pam Mink
  - Mimi Amelang
  - Michael Burian
  - Astrid Knott
  - Ben Nicla

## Managed Care Systems (MCS)

- **Program Manager:** Julie Erickson
- **Assistant Program Manager:** Alisha Simon

- Sara Dufour
- Andrea Ecklund
- Nathan Hierlmaier
- Mekibib Hirpo
- Eric Holland
- Kirsten Peterson
- Michelle Stein
- Brenda Sorvig
- Mary Timm
- Rachel Wittkopp
- Vacant

## Clearinghouse

- Reports to MCS
  - Cheryl Jacobson

## Office of Rural Health and Primary Care (ORHPC)

- **Program Manager:** Zora Radosevich
  - Robin Bly
  - Vacant

## MERC (Health Care Workforce and Education)

- **Supervisor:** Zora Radosevich
  - Diane Reger

## Rural Health System Development/Trauma

- **Deputy Director:** Tim Held
  - Emma Distel
  - Courtney Erdman
  - Maria Flor
  - LynMarie Harris
  - Jennifer Lucas
  - Tammy Peterson
  - Gina Vue

- Grace Liu, *student worker*
- Sarah Tannert-Learner, *student worker, HPCD*
- Dee Telkamp

## Health Workforce Planning and Analysis

- **Supervisor:** Nitika Moibi
  - Teri Fritsma
  - Valerie Stofferahn
  - Megan Loew
  - Melissa Stevens (Contractor)
  - Madison Weirick

## Health Care Workforce and Development

- **Supervisor:** Ann Linde
  - Siham Abdellah
  - Roble Aden
  - Larry Anenson
  - Viola Appiah-Danquah
  - Zomi Bloom
  - Lauren Bumgarner
  - Tarissa Host
  - Melanie Innes
  - Bethany Katka
  - Tonya Kjerland
  - Erik Larson
  - Ong Lee
  - Elizabeth Mago
  - Olivia Olson
  - David Revilla
  - Renee Richie
  - Samantha Rowbottom
  - Kayla Seymour
  - Stephanie Stull

## Primary Care and Workforce Programs

- **Supervisor:** Laura Sutter
  - Rebekah Ehlebracht
  - Elizabeth Fenske
  - Brenda Flattum
  - Katie Hentges
  - Daniel Merkl
  - Therese Nett
  - Ann Odens
  - Liza Root, *contractor*
  - Sarah Grafstrom
  - Mai La Ong Vang
  - Gao Nue Xiong

## Office of Vital Records (OVR)

- **Program Manager:** Molly Crawford

## Registrar's Office

- **Supervisor:** Molly Crawford
  - Mary L Connor
  - Heidi Granlund
  - Dylan Slivik
  - Sarah Ryan
  - Shonda Wright

## Performance and Security

- **Supervisor:** Anne Kleppe
  - Sally Almond
  - Nancy Bollman
  - Melanie Charpentier
  - Cheri Denardo
  - Kimmie Derosa
  - Carl Haydel
  - Nicole Hering

- Ali Ruprecht

## Customer Support and Fulfillment

- **Supervisor:** Bill Devine
  - Jose Andrade
  - Shelly Eichenlaub
  - Annie Endrizzi
  - Michael Fanslow
  - Josh Freed
  - James Kasal
  - Lisa Khambata
  - Abdikareem Mahamud
  - Justin Maine
  - Sharon Mitchell
  - John Mogren
  - Michaelyn Nelsen
  - Seth Nesting
  - Mary Roguski
  - Ariel Vang
  - Gretchen Younger

## Registration and Fulfillment

- **Supervisor:** Krista Bauer
  - Lead: Maria Schaff
  - Jean Cocchiarella
  - Kimberly Dodge
  - Aura Mendoza Albuquerque
  - Jean Garman
  - Maureen Sheehy-Kustaa

## Health Policy MN.IT Services

- **Supervisor:** Erica Johnson
  - Jason Tillman
  - Noah Mosley

## HEALTH POLICY STAFF

- Hung Nguyen
- Adrian Flak
- Yang Yang
- Mashood Yunus

Minnesota Department of Health  
Health Policy Division  
PO Box 64975  
St. Paul, MN 55164-0975  
[www.health.state.mn.us](http://www.health.state.mn.us)

To obtain this information in a different format, call: 651-201-3560